

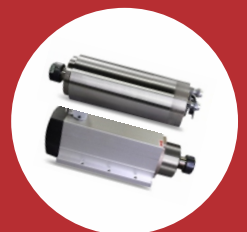
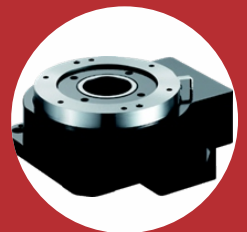
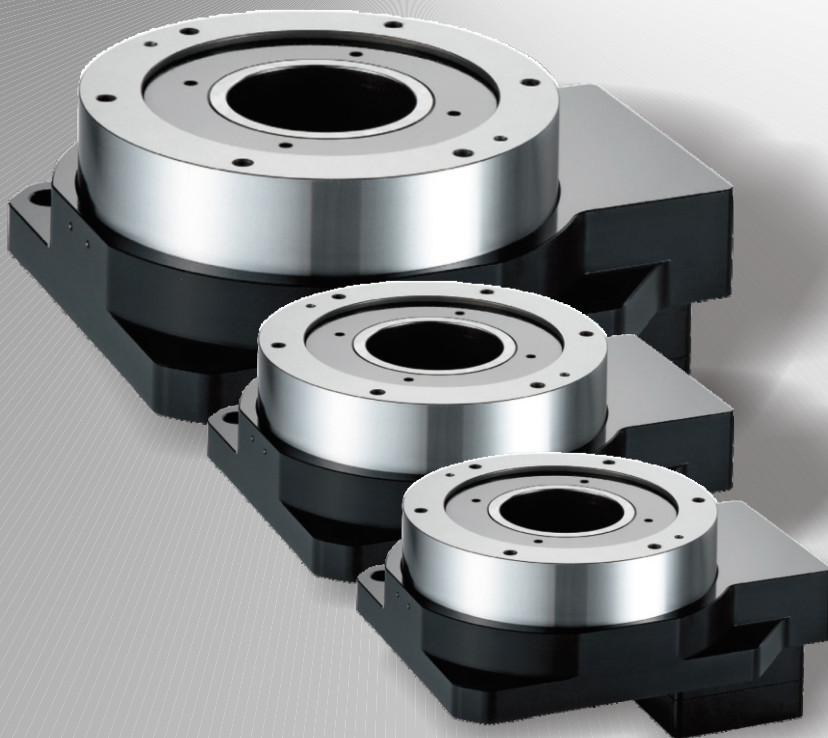
PRODUCT CATALOG

Hollow Rotary Actuator

**Precise and Reliable
Motion Control Solutions**

High Rigidity
High Torque and Load
Flexible Installation and Customization

High Precision
Long Lifetime



About Us

-Automate In A Better Way-

COMPANY

Reliable & Long-Term Partnership

Focused on Providing Comprehensive, Reliable and Precise Motion Control Solutions with High Quality & Competitive Pricing.

Rich Industrial Automation Experiences

Future Oriented Development Strategy

Open For Overseas Market Cooperation



RESEARCH & DEVELOPMENT

Deliver the Best

More than 15 Years Motion Control R&D Experiences of Key Experts

Wide International R&D Cooperation

Continuous Cutting-Edge & Practical Technology Implement

Flexible & Fast Customization



PRODUCTS

Beyond Your Expectation

Wide Range of Motion Control Solutions, Designed for Different Market Segments.

Top Level of Products Performance with High Reliability & Attractive Prices. .

100% Replacements of Top Brands with Extra Values and Benefits.

PRODUCTION

Deliver the Best

Strict Quality Control System

100% Functional Test

48 Hours Aging Test

ISO9001 Certificates of Factories
3C, UL, CE, RoHS, etc. Certificates.

Target Application Markets

Covering Majority of Automation Applications

Electronics and Semiconductors, CNC (Laser, Plasma, Water Jet, Cutting, Milling, Engraving, Polishing, Positioning, etc.), Machine Tools, Medical, Aerospace, Test Bed, Packaging(Marking, Labeling, Feeding, etc.), Sewing, Printing, Textile, Dying, Fabrication, Surveillance, Logistics, Factory Automation, Sorting, Farming, Robotics, Printing, Automotive, Telecom, SPM, etc.



SERVICES

Professional and In Time

7*24H Technical Support.

Remote and On-site Training

Local Market Co-marketing

≥18 Months Warranty (5Years for some products)

Quick Customization and Delivery

Reliability

Process

Technology

Innovation

Productivity

System

AUTOMATION

Repeatability

Control

Precision

Products and Applications

—Precise & Reliable Motion Control Solutions—

2 & 3 Phase Stepper Drive

Step & Step Servo Drive
in One, 0.4-8.0A,
DC(12-75V) and AC(80-265VAC),
Pulse&DIR, CW&CCW,
EtherCAT, CanOpen, Profinet Mode-bus
Rich Special&Practical Functions,
Wide Applications in High-End Market,
Unique Design with Patents,
Fast Customization.



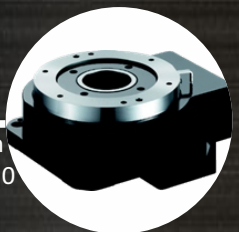
Auto Positioning Platform

Ultra Thin, Lightweight,
Hollow structure,
Hi Rigidity and Accuracy,
Size in Full Range.



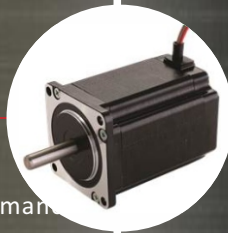
Rotar Actuators

Max. Torque 5-480N.m
Reduction Ratio 5 to 250
IP65
Direct Connection
Hollow Shaft
Flexible Installation
High Positioning Accuracy
Easy Equipped with Moto



2 & 3 Phase Stepper Motor

Nema11 to Nema52,
0.07 to 33.0N.m,
High Quality and Performance
Low heating and Vibration,
Hollow Shaft, Waterproof,
High Speed etc.
Fast Customization .



Planetary Gear Reducers

Round, Square,
Right-angle Types,
Size 28 to 120mm,
Standard Precision 12-18arcmin,
High Precision 3 and 5arcmin,
Rich Reduction Ratios,
High Input Speed, High Torque,
>20000 hours Lifetime,
Life-long Lubrication.



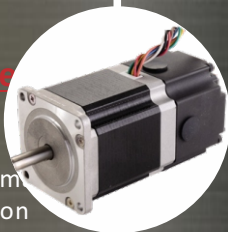
Electric Cylinders

Vertical, Horizontal,
Guideway
Reduction Ratio 5 to 250
IP65
Direct Connection
Hollow Shaft
Flexible Installation
High Positioning Accuracy
Easy Equipped with Moto



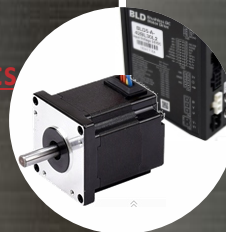
2 Phase Stepper Motor with Brake

Nema17 to Nema34
0.07 to 33.0N.m
High Quality and Performance
Low heating and Vibration
Extra Long Lifetime
Hollow Shaft, Waterproof,
High Speed etc.
Fast Customization



Brushless Products

30 to 750W
80 to 4000RPM
Low Noise
Low Vibration
Low Heating
Long Lifetime, Easy Maintenance
Customization Supported



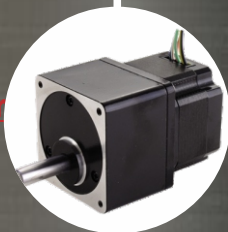
Electric Spindles

800W to above 30kW
Water and Air Cooling
Wood, Stone, Metal,
Glass etc.
High Precision and Performance
Flexible Customization



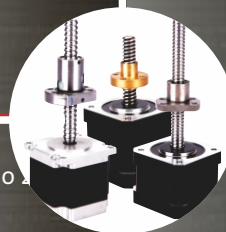
2 Phase Integrated Stepper Motor with Reducer

Nema17 to Nema34
0.2 to 12.0N.m
Compact Design,
High Reduction Ratios
1:3.6 to 1:100
High Smoothness
Extra Long Lifetime
Flexible Customization



2 Phase Linear Stepper Motor

Nema17 to Nema34
Rated Push Strength 5 to 20N
Lead 0.61 to 10mm
Word-Class Lead Screw
High performance
Flexible Customization



Variable Frequency Drives

750W to above 30kW
Vector Control
Extra Long Life Time
Rich Functions and Interfaces
High Reliability



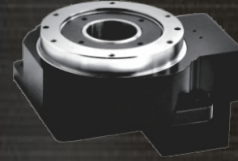
FACTORY AUTOMATION CUTTING MARKING ELECTRONIC
CABLING CNC LABELLING LASER MACHINE TOOL
METAL WORK PACKAGING MEDICAL SURVEILLANCE
TEXT BED SORTING WOOD WORK MARBLE WORK SEWING
GLASS WORK PLASMA ENGRAVING TEXTILE

Hollow Rotary Actuators Overview

Table Size 60 to 200mm

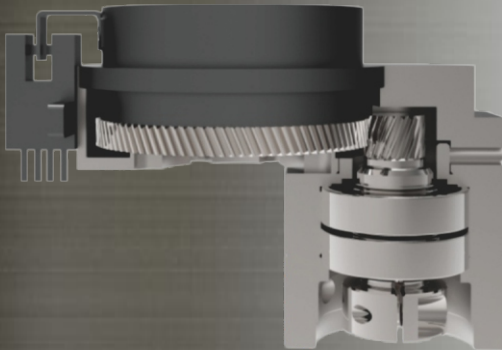
Model List

Model	Max. Torque	Max. Axial Load	Max. Radial Load	Max. Speed	Gear Ratio	Positioning Precision	Life Time
YKW60K-5	5N.m	10kg	5N.m	720° /s	1:5	3arcmin	>15000h
YKW60K-15	5N.m	10kg	5N.m	720° /s	1:15	8arcmin	>15000h
YKW60K-18	5N.m	10kg	5N.m	720° /s	1:18	3arcmin	>15000h
YKW85K-5	15N.m	30kg	20N.m	720° /s	1:5	3arcmin	>15000h
YKW85K-10	10N.m	30kg	20N.m	720° /s	1:10	3arcmin	>15000h
YKW85K/R-15	15N.m	30kg	20N.m	720° /s	1:15	8arcmin	>15000h
YKW85K/R-30	10N.m	30kg	20N.m	720° /s	1:30	8arcmin	>15000h
YKW130K-10	45N.m	100kg	80N.m	720° /s	1:10	3arcmin	>15000h
YKW130K/R-18	20N.m	100kg	80N.m	720° /s	1:18	3arcmin	>15000h
YKW130K/R-30	45N.m	100kg	80N.m	720° /s	1:30	8arcmin	>15000h
YKW200K-10	20N.m	200kg	80N.m	720° /s	1:10	3arcmin	>15000h
YKW200K/R-18	50N.m	200kg	80N.m	720° /s	1:18	3arcmin	>15000h
YKW200K/R-30	80N.m	200kg	80N.m	720° /s	1:30	8arcmin	>15000h

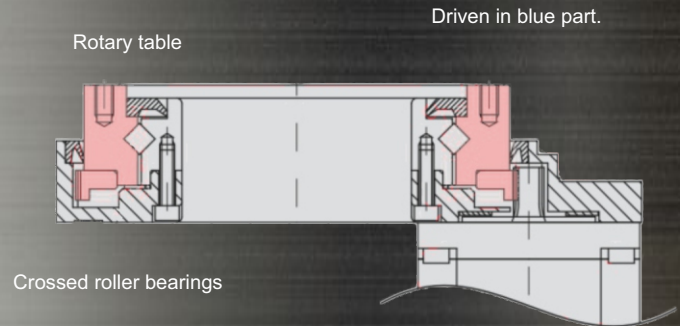


Advantages

Integrated molding, high load carrying rigidity, no risk of slipping.

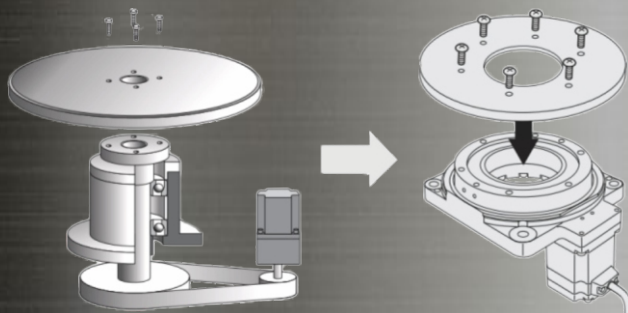


Internal Structure



Reduce Design Time

The workable and mechanical arm of the device can be directly installed on the rotating platform. Compared with the use of mechanism parts such as pulleys, the man-hours and costs of mechanism design, parts deployment, and belt condition adjustment can be reduced.



Motor + mechanism parts

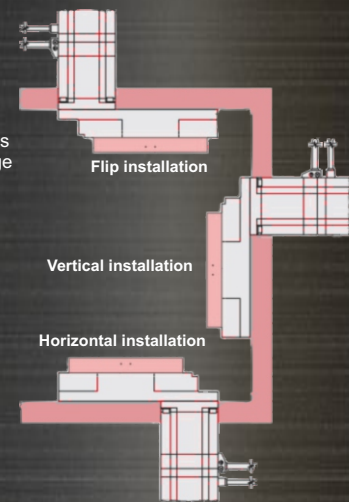
Integrated

Flexible Installation

In addition to horizontal installation, the YKW series can be installed in a wide range of vertical or inverted installations.

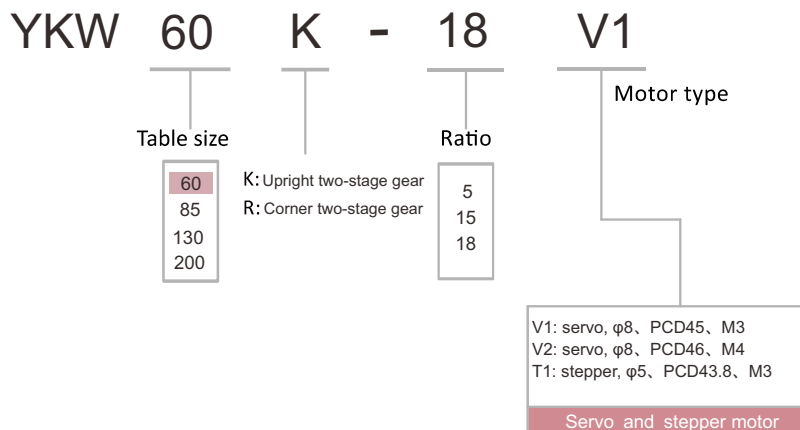
Notes:

A small amount of lubricating oil occasionally leaks out of the hollow rotary transmission. If the leakage of lubricant causes pollution to the surrounding environment, please confirm it during periodic inspection or install an oil pan.



YKW60 Series Hollow Rotary Actuators

Naming Rules

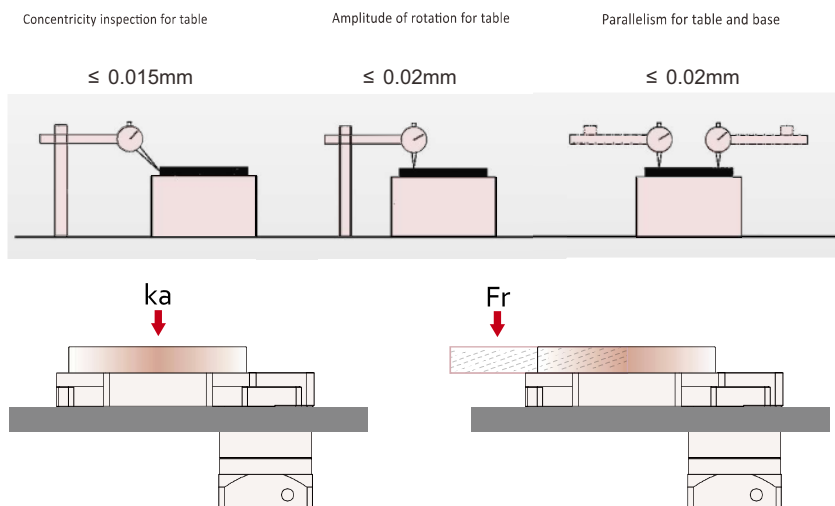


Specifications

Model	YKW60K-5□	YKW60K-18□	YKW60R-15□		
Max. torque	N-m		5		
Max. axial load (K_a)	kg		10		
Max. radial force (F_r)	N-m		5		
Max. speed of table	720° / sec				
Gear ratio	i		5、15、18		
Positioning precision	3arc-min		8arc-min		
Repetitive precision	$\leq \pm 15$ arc-sec		$\leq \pm 30$ arc-sec		
Lifetime of precision($h\eta$)	≥ 15000				
Protection rating	IP40				
Temperature	0°C ~ +60°C				
Weight	kg	0.6	0.6	1.5	1.5

* More ratios available and customization accepted.

Position Precision Inspections

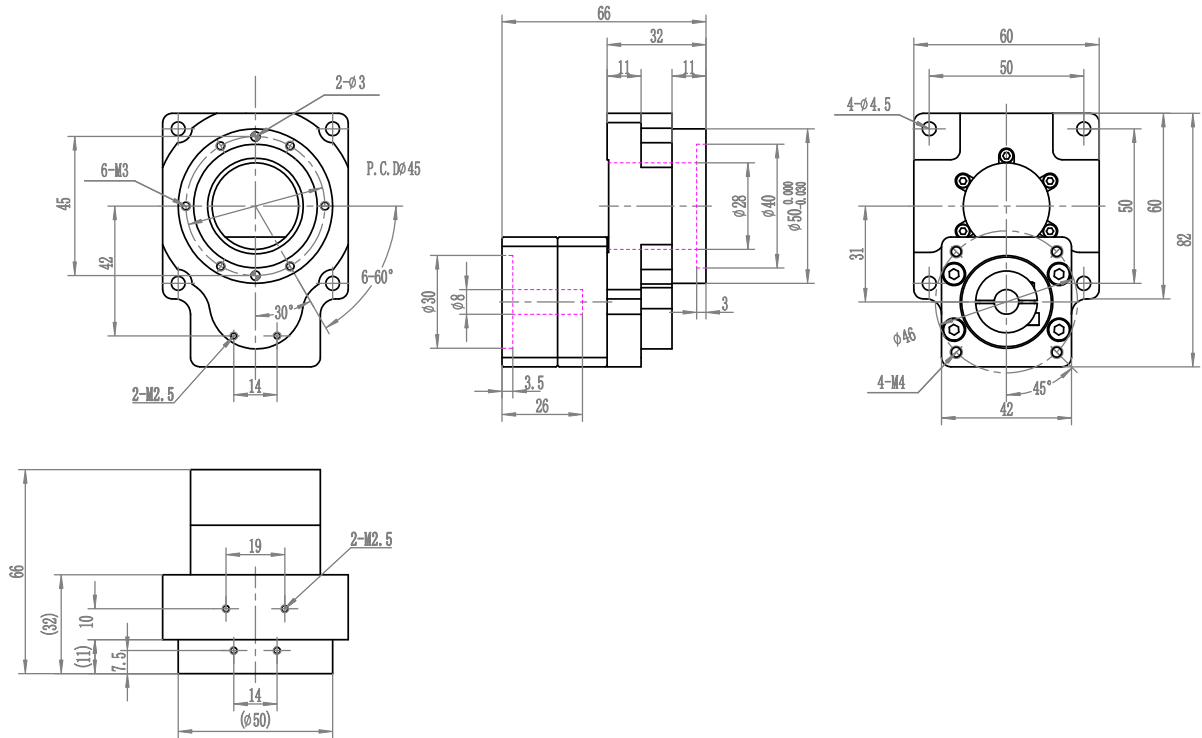


Customization Information

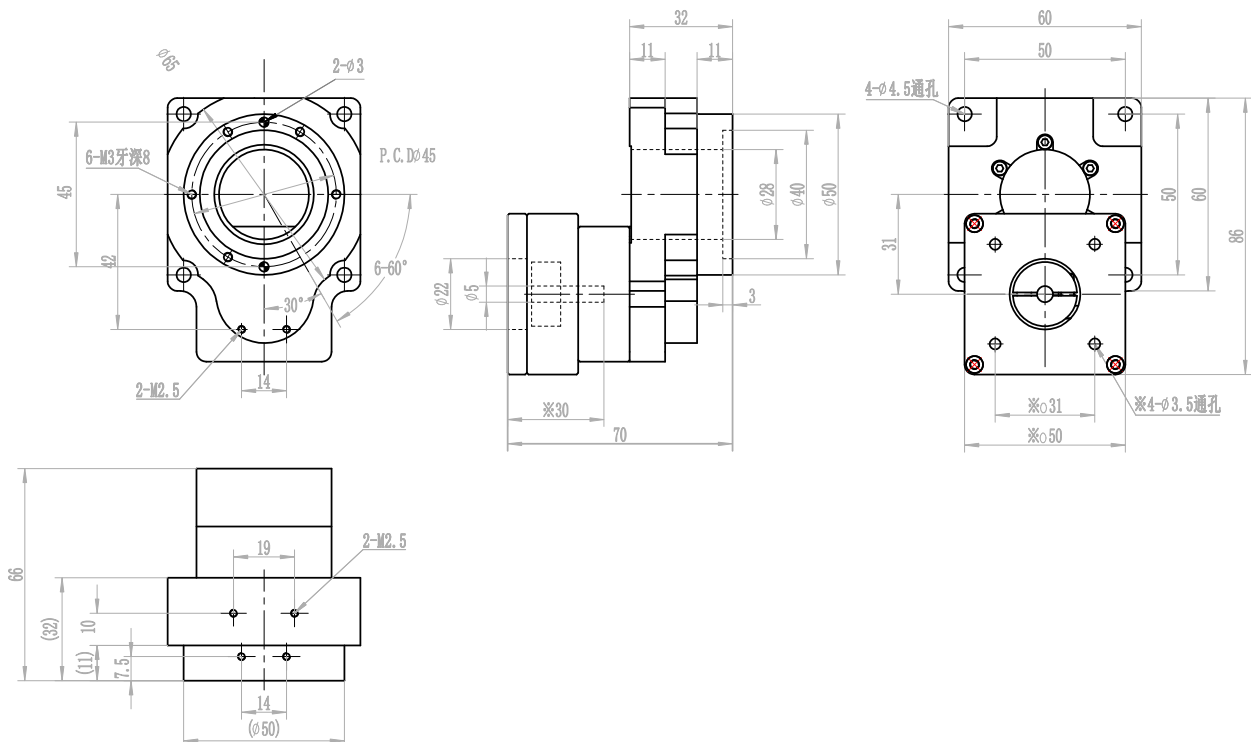
- ▲ The customization of $\leq 0.002\text{mm}$ rotation amplitude
 - ▲ $\leq 0.002\text{mm}$ parallelism is also available.
- For special needs, please contact with us.

YKW60 Series Mechanical Drawings in mm

YKW60K-(5/18)V2



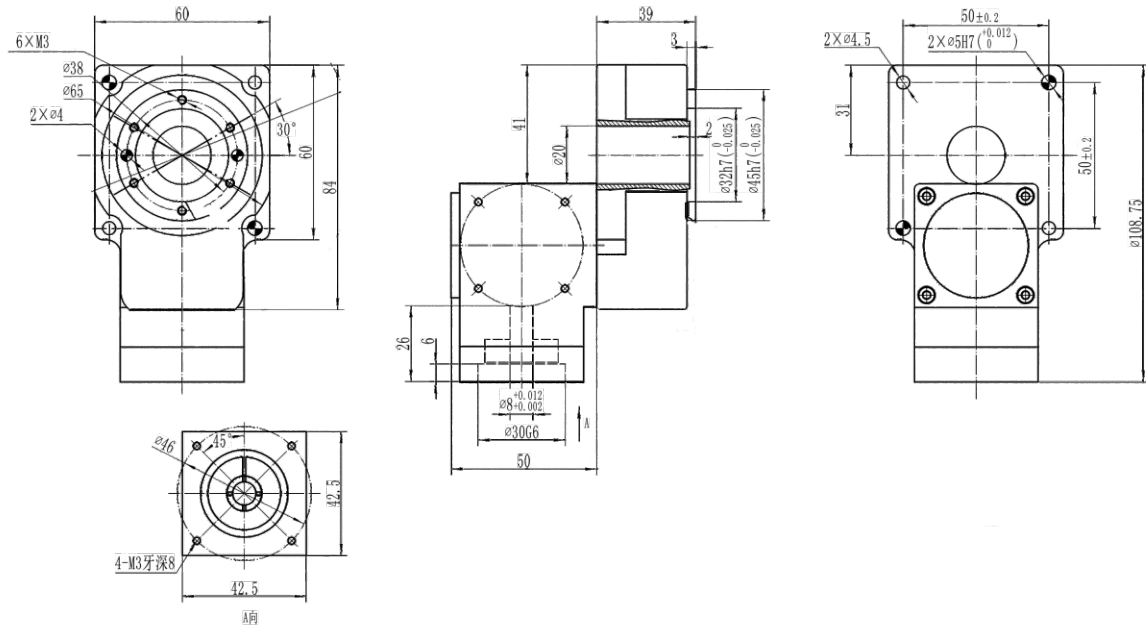
YKW60K-(5/18)T1



30

YKW60 Series Mechanical Drawings in mm

YKW60R



YKW85 Series Hollow Rotary Actuators

Naming Rules

YKW 85 K - 10 V1

Table size

60
85
130
200

K: Upright two-stage gear
R: Corner two-stage gear

Ratio

5
10
15
30

Motor type

V1: Ø14-PCD70-M4	T1: Ø8-PCD66.67-M4
V2: Ø14-PCD70-M5	T2: Ø8-PCD70-M4
V3: Ø11-PCD70-M4	T3: Ø10-PCD70-M4
	T4: Ø6.35-PCD66.67-M4
200~400W servo motor	60mm stepper motor



Specifications

Model	YKW85K-5□	YKW85K-10□	YKW85K-15□ YKW85R-15□	YKW85K-30□ YKW85R-30□	
Max. torque	N-m	15	10	15	10
Max. axial load (K_a)	kg	30			
Max. radial force (Fr)	N-m	20			
Max. speed of table		720° / sec			
Gear ratio	i	Please contact us for more ratio. 5, 10, 15, 30			
Positioning precision		3arc-min	8arc-min		
Repetitive precision		≤±15arc-sec		≤±30arc-sec	
Lifetime of precision (hr)		≥15000			
Protection rating		IP40			
Temperature		0°C ~ +60°C			
Weight	kg	1.2	1.2	2.5	2.5

* Please contact us for more ratio.

Position Precision Inspections

Concentricity inspection for table

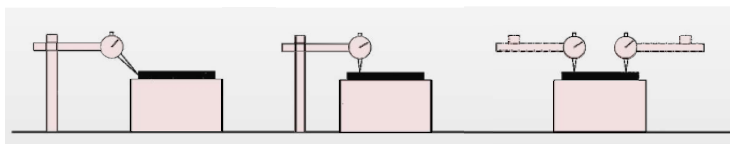
Amplitude of rotation for table

Parallelism for table and base

≤ 0.015mm

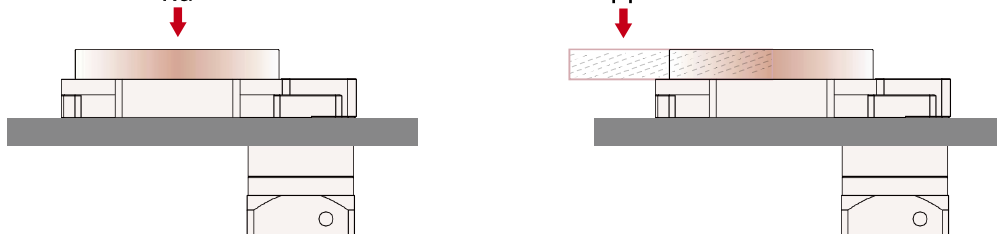
≤ 0.02mm

≤ 0.02mm



k_a

Fr

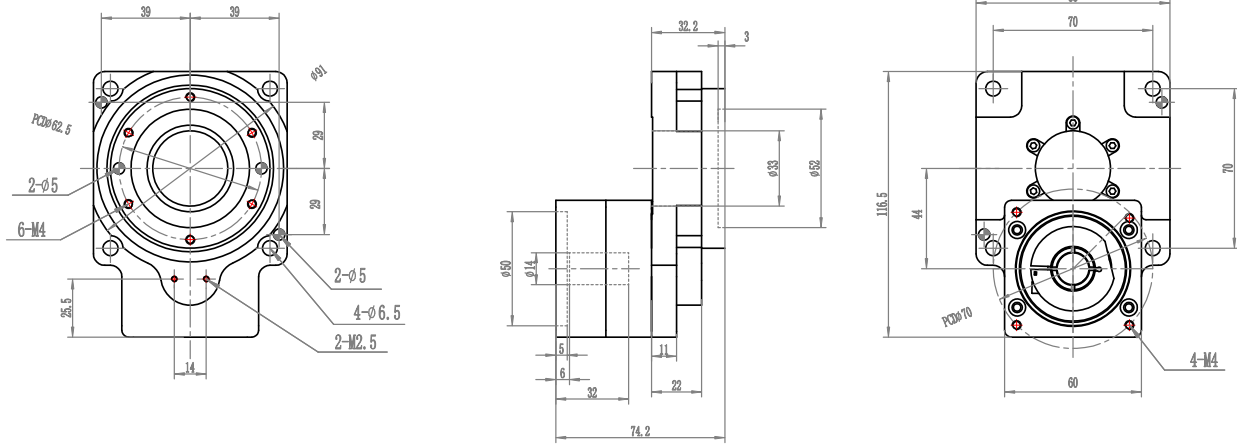


Customization Information

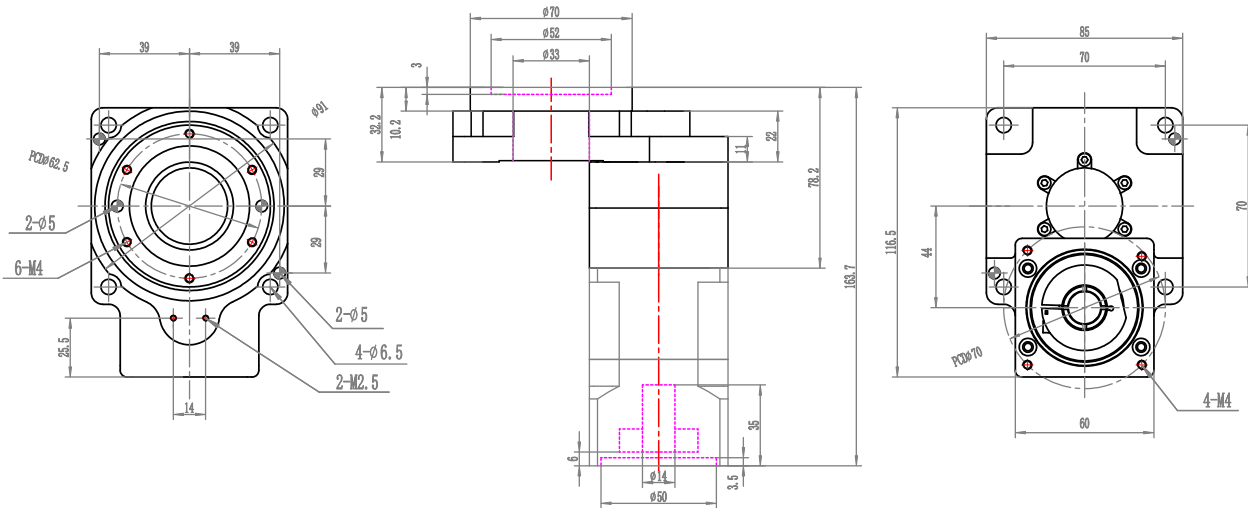
- ▲ The customization of ≤0.002mm rotation amplitude /
 - ▲ ≤0.002mm parallelism is also available.
- For special needs, please contact with us.

YKW85 Series Mechanical Drawings in mm

YKW85K5/10



YKW85K15/30



YKW130 Series Hollow Rotary Actuators

Naming Rules

YKW 130 K - 10 V1

Table size

60
85
130
200

K: Upright two-stage gear
R: Corner two-stage gear

Ratio

10
18
30

Motor type



V1: Ø14-PCD70-M4	T1: Ø8-PCD66.67-M4
V2: Ø14-PCD70-M5	T2: Ø8-PCD70-M4
V3: Ø11-PCD70-M4	T3: Ø10-PCD70-M4
	T4: Ø6.35-PCD66.67-M4
200~400W servo motor	60mm stepper motor

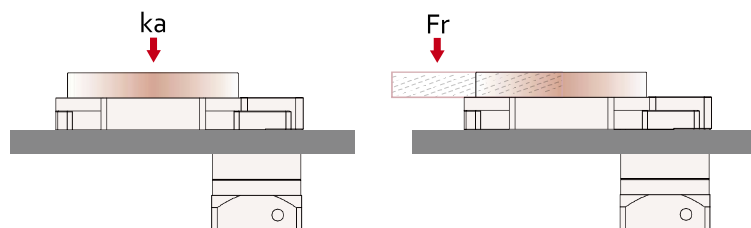
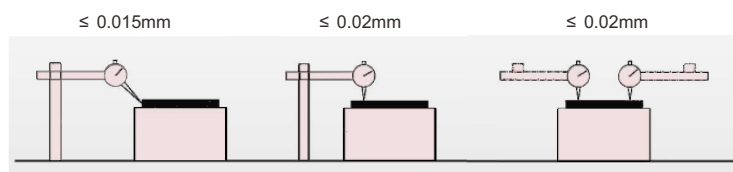
Specifications

Model	YKW130K-10□	YKW130K-18□ YKW130R-18□	YKW130K-30□ YKW130R-30□		
Max. torque	N-m	45	20	45	
Max. axial load (K_a)	kg	100			
Max. radial force (F_r)	N-m	60			
Max. speed of table		720° / sec			
Gear ratio	i	10、18、30			
Positioning precision		3arc-min	8arc-min		
Repetitive precision		≤±15arc-sec	≤±30arc-sec		
Lifetime of precision (h_T)		≥15000			
Protection rating		IP40			
Temperature		0°C ~ +60°C			
Weight	kg	2.8	2.8	4.2	4.2

* Please contact us for more ratio.

Position Precision Inspections

Concentricity inspection for table Amplitude of rotation for table Parallelism for table and base

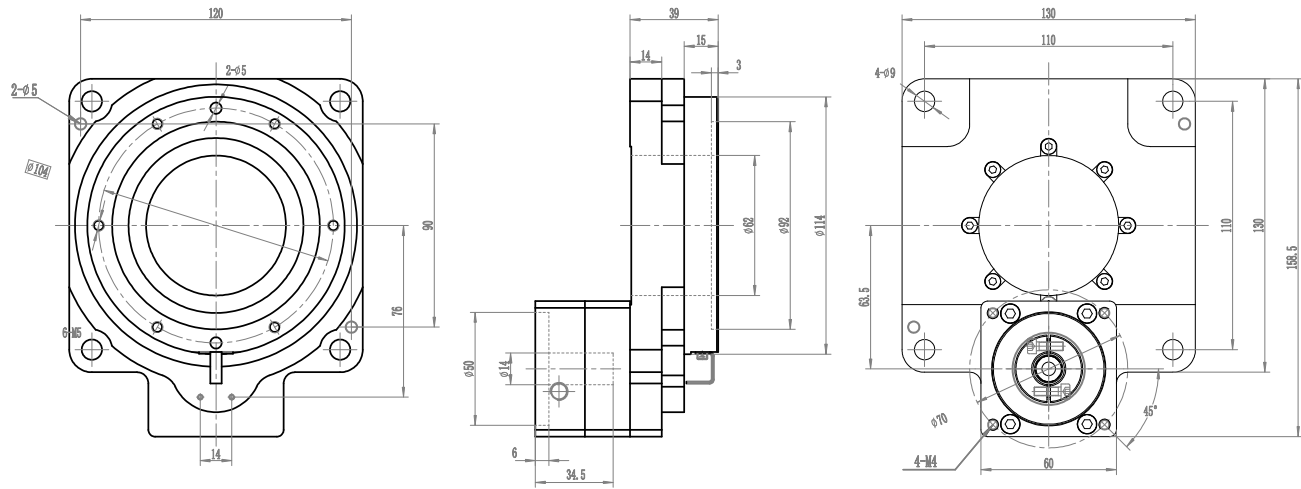


Customization Information

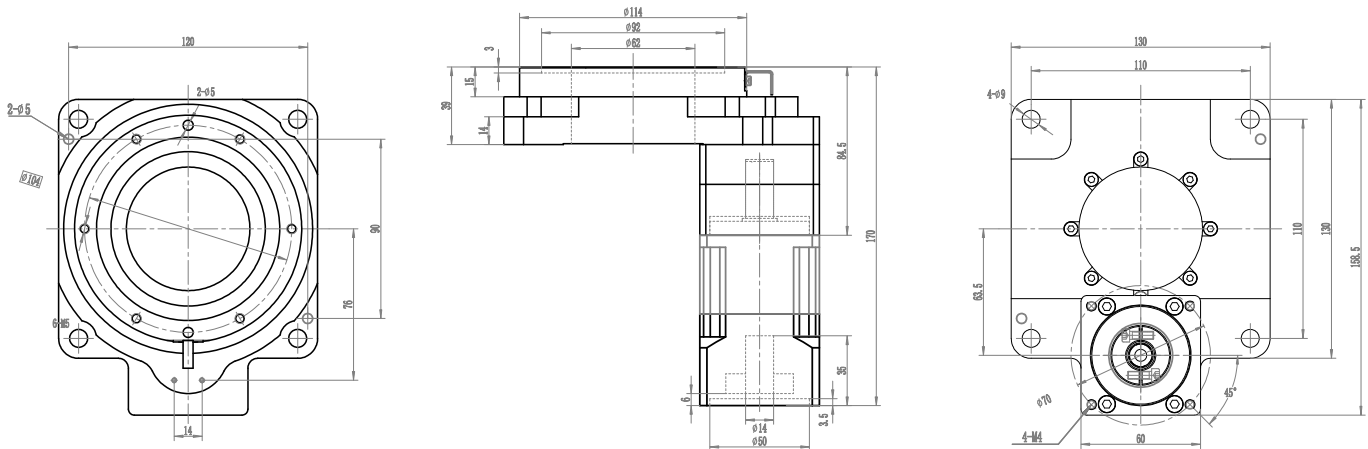
- ▲ The customization of $\leq 0.002\text{mm}$ rotation amplitude /
 - ▲ $\leq 0.002\text{mm}$ parallelism is also available.
- For special needs, please contact with us.

YKW130 Series Mechanical Drawings in mm

YKW130K10/18

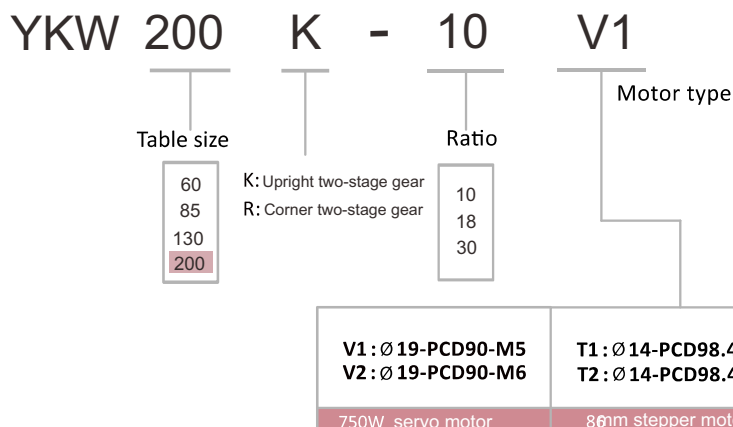


YKW130K30



YKW200 Series Hollow Rotary Actuators

Naming Rules

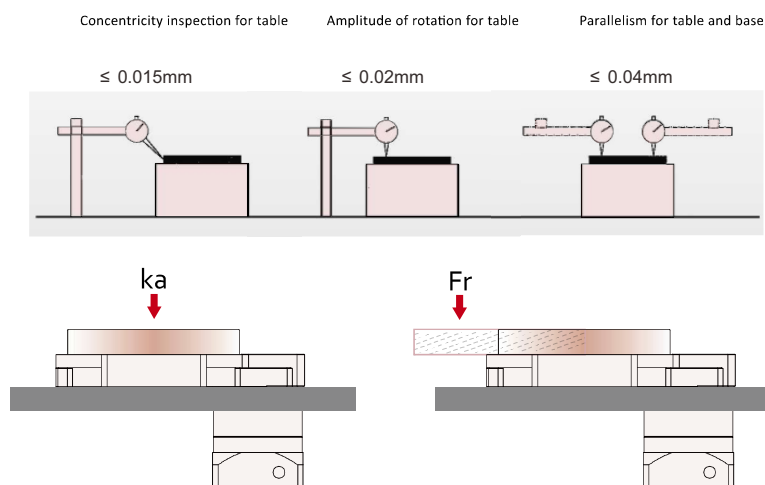


Specifications

Model	YKW200K-10□	YKW200K-18□ YKW200R-18□	YKW200K-30□ YKW200R-30□		
Max. torque	N-m	80	50	80	
Max. axial load (K_a)	kg	200			
Max. radial force (Fr)	N-m	80			
Max. speed of table		720° / sec			
Gear ratio	i	10、18、30			
Positioning precision		3arc-min	8arc-min		
Repetitive precision		≤±15arc-sec	≤±30arc-sec		
Lifetime of precision		≥15000			
Protection rating		IP40			
Temperature		0°C ~ +60°C			
Weight	kg	9.6	9.6	15	15

* Please contact us for more ratio.

Position Precision Inspections

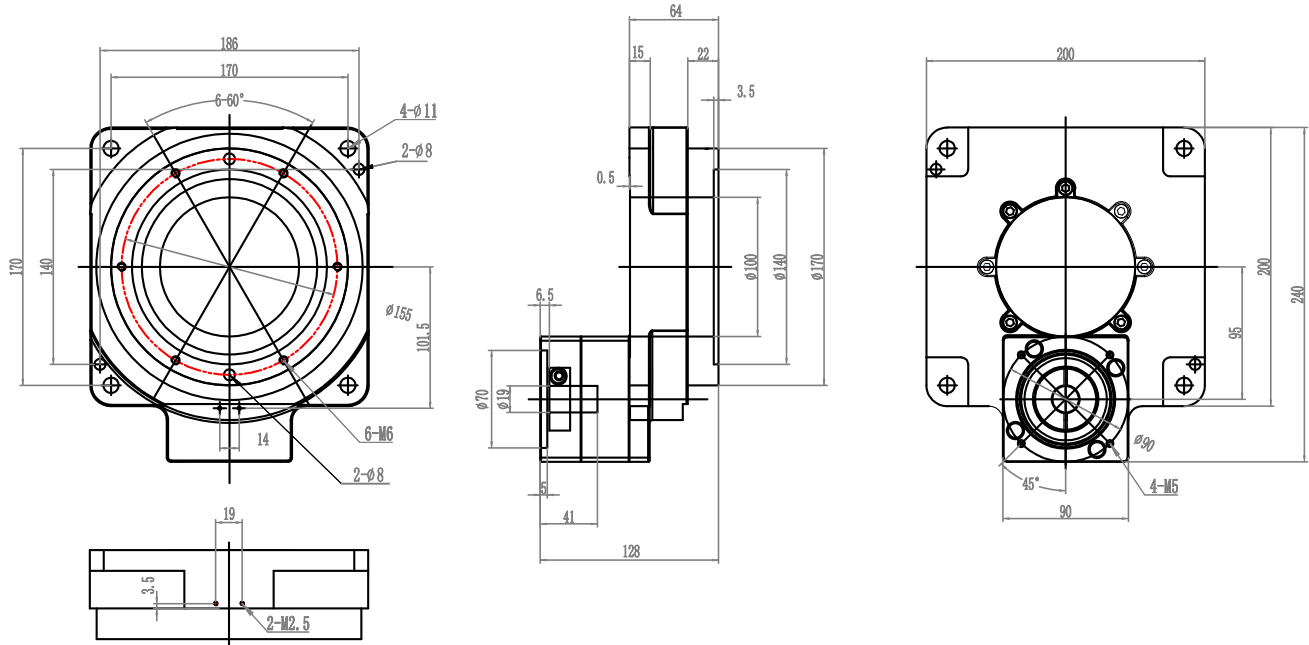


Customization Information

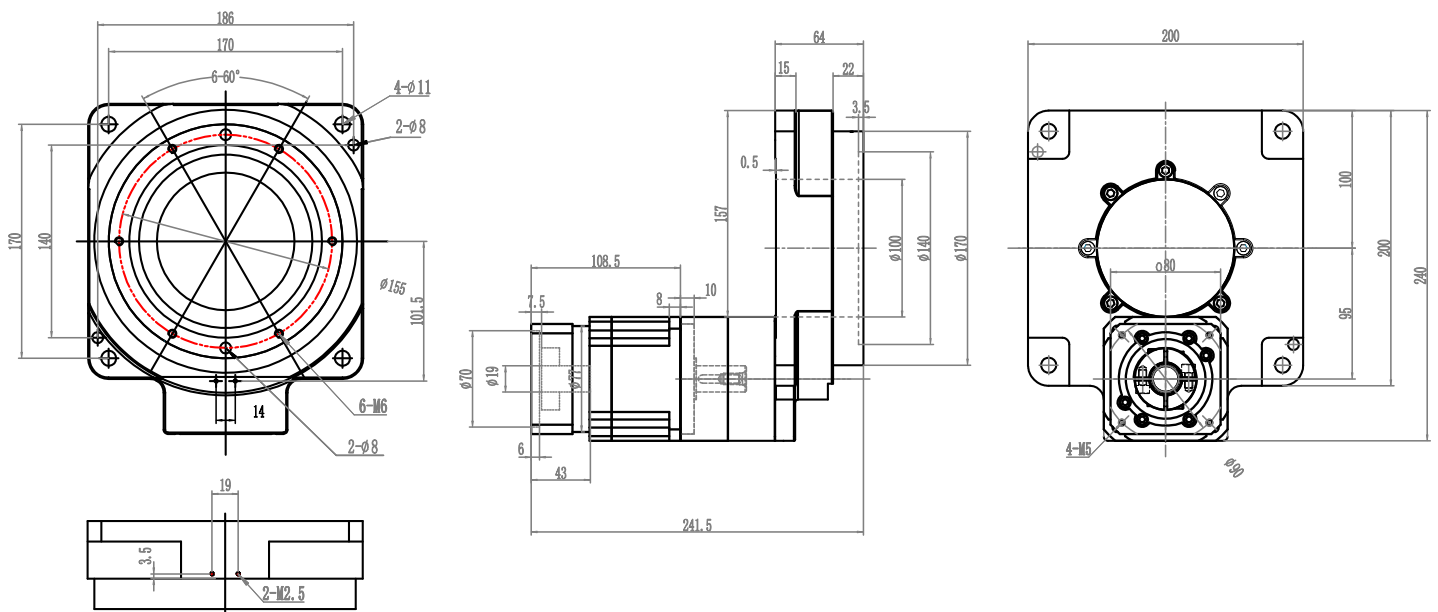
- ▲ The customization of ≤0.002mm rotation amplitude /
 - ▲ ≤0.002mm parallelism is also available.
- For special needs, please contact with us.

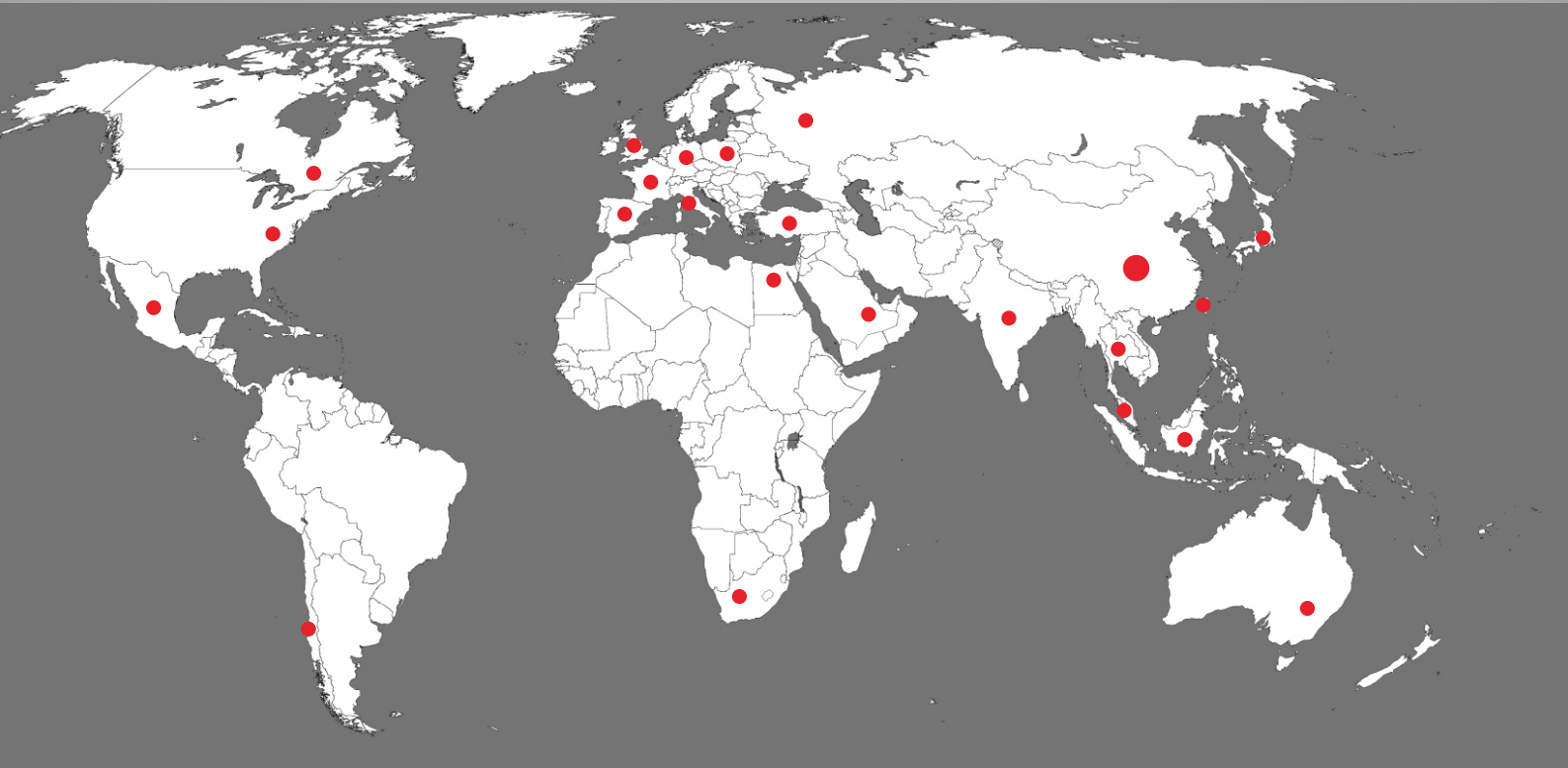
YKW200 Series Mechanical Drawings in mm

YKW200K10/18



YKW200K30





Contact Us

Zion Kaifull Automation Technology Co., Ltd.

Address: Floor 18, Tower B, No.89 of L.X. Road,
Longgang District, Shenzhen, China.

Email : sales@zionkaifull.com
technic@zionkaifull.com

Phone : 0086-186 8216 0096

Fax : 0086-0755-2836 4232

Website: www.zionkaifull.com

