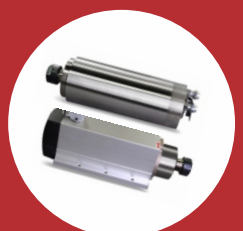
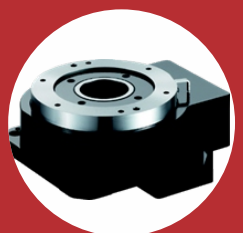
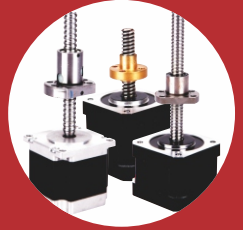


PRODUCT CATALOG

Advanced Vector Control VFD Products

**Precise and Reliable
Motion Control Solutions**



About Us

-Automate In A Better Way-

COMPANY

Reliable & Long-Term Partnership

Focused on Providing Comprehensive, Reliable and Precise Motion Control Solutions with High Quality & Competitive Pricing.

Rich Industrial Automation Experiences

Future Oriented Development Strategy

Open For Overseas Market Cooperation



RESEARCH & DEVELOPMENT

Deliver the Best

More than 15 Years Motion Control R&D Experiences of Key Experts

Wide International R&D Cooperation

Continuous Cutting-Edge & Practical Technology Implement

Flexible & Fast Customization



PRODUCTS

Beyond Your Expectation

Wide Range of Motion Control Solutions, Designed for Different Market Segments.

Top Level of Products Performance with High Reliability & Attractive Prices. .

100% Replacements of Top Brands with Extra Values and Benefits.

PRODUCTION

Deliver the Best

Strict Quality Control System

100% Functional Test

48 Hours Aging Test

ISO9001 Certificates of Factories

3C, UL, CE, RoHS, etc. Certificates.

Target Application Markets

Covering Majority of Automation Applications

Electronics and Semiconductors, CNC (Laser, Plasma, Water Jet, Cutting, Milling, Engraving, Polishing, Positioning, etc.), Machine Tools, Medical, Aerospace, Test Bed, Packaging(Marking, Labeling, Feeding, etc.), Sewing, Printing, Textile, Dying, Fabrication, Surveillance, Logistics, Factory Automation, Sorting, Farming, Robotics, Printing, Automotive, Telecom, SPM, etc.



SERVICES

Professional and In Time

7*24H Technical Support.

Remote and On-site Training

Local Market Co-marketing

≥18 Months Warranty (5Years for some products)

Quick Customization and Delivery



Products and Applications

—Precise & Reliable Motion Control Solutions—

2 & 3 Phase Stepper Drive

Step & Step Servo Drive
in One, 0.4-8.0A,
DC(12-75V) and AC(80-265VAC),
Pulse&DIR, CW&CCW,
EtherCAT, CanOpen, Profinet Mode-bus
Rich Special&Practical Functions,
Wide Applications in High-End Market,
Unique Design with Patents,
Fast Customization.



Auto Positioning Platform

Ultra Thin, Lightweight,
Hollow structure,
Hi Rigidity and Accuracy,
Size in Full Range.



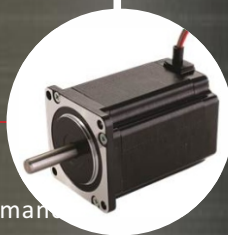
Rotar Actuators

Max. Torque 5-480N.m
Reduction Ratio 5 to 250
IP65
Direct Connection
Hollow Shaft
Flexible Installation
High Positioning Accuracy
Easy Equipped with Moto



2 & 3 Phase Stepper Motor

Nema11 to Nema52,
0.07 to 33.0N.m,
High Quality and Performance
Low heating and Vibration,
Hollow Shaft, Waterproof,
High Speed etc.
Fast Customization.



Planetary Gear Reducers

Round, Square,
Right-angle Types,
Size 28 to 120mm,
Standard Precision 12-18arcmin,
High Precision 3 and 5arcmin,
Rich Reduction Ratios,
High Input Speed, High Torque,
>20000 hours Lifetime,
Life-long Lubrication.



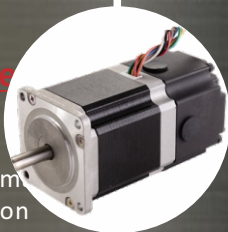
Electric Cylinders

Vertical, Horizontal,
Guideway
Reduction Ratio 5 to 250
IP65
Direct Connection
Hollow Shaft
Flexible Installation
High Positioning Accuracy
Easy Equipped with Moto



2 Phase Stepper Motor with Brake

Nema17 to Nema34
0.07 to 33.0N.m
High Quality and Performance
Low heating and Vibration
Extra Long Lifetime
Hollow Shaft, Waterproof,
High Speed etc.
Fast Customization



Brushless Products

30 to 750W
80 to 4000RPM
Low Noise
Low Vibration
Low Heating
Long Lifetime, Easy Maintenance
Customization Supported



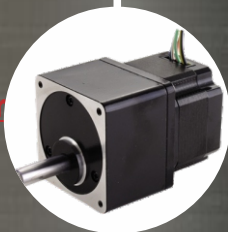
Electric Spindles

800W to above 30kW
Water and Air Cooling
Wood, Stone, Metal,
Glass etc.
High Precision and Performance
Flexible Customization



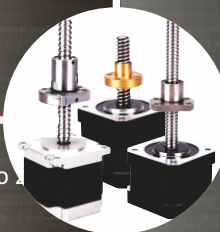
2 Phase Integrated Stepper Motor with Reducer

Nema17 to Nema34
0.2 to 12.0N.m
Compact Design,
High Reduction Ratios
1:3.6 to 1:100
High Smoothness
Extra Long Lifetime
Flexible Customization



2 Phase Linear Stepper Motor

Nema17 to Nema34
Rated Push Strength 5 to 20N
Lead 0.61 to 10mm
Word-Class Lead Screw
High performance
Flexible Customization



Variable Frequency Drives

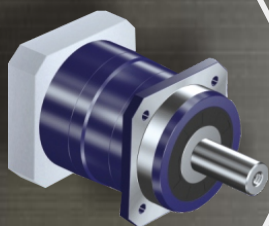
750W to above 30kW
Vector Control
Extra Long Life Time
Rich Functions and Interfaces
High Reliability



FACTORY AUTOMATION CUTTING MARKING ELECTRONIC
CABLING CNC LABELLING LASER MACHINE TOOL
METAL WORK PACKAGING MEDICAL SURVEILLANCE
TEXT BED SORTING WOOD WORK MARBLE WORK SEWING
GLASS WORK PLASMA ENGRAVING TEXTILE

Helical Gear Precision Planetary Gear Reducers

Matching All Motors

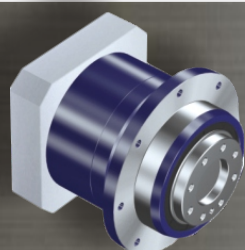
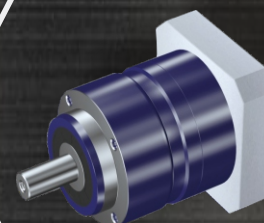


AF Series

Frame Size(mm)	: 60, 90, 110, 145, 180;
Reduction Ratios	: 3 to 10 (1 Stage), 15 to 100 (2 Stage);
Backlash	: 3 arcmin, 5 arcmin, 7 arcmin;
Input & Output Shaft Type	: All Main Stream, Customizable;
Average Lifetime	: >20000 Hours

AL Series

Frame Size(mm)	: 70, 90, 120, 155, 2095;
Reduction Ratios	: 3 to 10 (1 Stage), 15 to 100 (2 Stage);
Backlash	: 5 arcmin, 7 arcmin;
Input & Output Shaft Type	: All Main Stream, Customizable;
Average Lifetime	: >20000 Hours

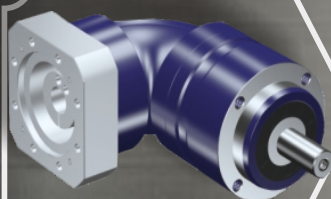
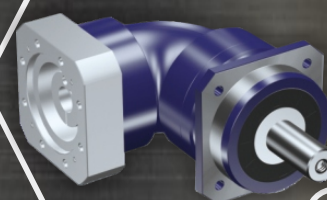


AH Series

Frame Size(mm)	: 64, 90, 110;
Reduction Ratios	: 4 to 10 (1 Stage), 16 to 100 (2 Stage);
Backlash	: 3 arcmin, 5 arcmin;
Input & Output Shaft Type	: All Main Stream, Customizable;
Average Lifetime	: >20000 Hours

ZAF Series

Frame Size(mm)	: 60, 90, 115, 140;
Reduction Ratios	: 3 to 10 (1 Stage), 16 to 100 (2 Stage);
Backlash	: 6 arcmin, 9 arcmin;
Input & Output Shaft Type	: All Main Stream, Customizable;
Average Lifetime	: >20000 Hours



ZAL Series

Frame Size(mm)	: 70, 90, 120, 155;
Reduction Ratios	: 3 to 10 (1 Stage), 16 to 100 (2 Stage);
Backlash	: 6 arcmin, 9 arcmin;
Input & Output Shaft Type	: All Main Stream, Customizable;
Average Lifetime	: >20000 Hours

Spur Gear Precision Planetary Gear Reducers

Matching All Motors with Great Performance


PLE series reducer (PLE060 PLE090 PLE120 PLE160)

4 optional size		60mm , 90mm , 120mm , 160mm	
Rated output torque		8.5Nm~680.0Nm	
Ratio	1-stage	3、4、5、7、10	
	2-stage	12、16、20、25、28、35、40、50、70、100	
	3-stage	80、100、125、140、175、200、250、350、400、500、700、1000	
backlash	1-stage	Precision: <3 arc/min	Standard: <8 arc/min
	2-stage	Precision: <5 arc/min	Standard: <10 arc/min
	3-stage	Precision: <8 arc/min	Standard: <12 arc/min

PLF series reducer (PLF060 PLF090 PLF120 PLF160)

4 optional size		60mm , 90mm , 120mm , 160mm	
Rated output torque		8.5Nm~680.0Nm	
Ratio	1-stage	3, 4, 5, 7, 10	
	2-stage	12, 16, 20, 25, 28, 35, 40, 50, 70, 100	
	3-stage	80, 100, 125, 140, 175, 200, 250, 350, 400, 500, 700, 1000	
backlash	1-stage	Precision: <3 arc-min	Standard: <8 arc-min
	2-stage	Precision: <5 arc-min	Standard: <10 arc-min
	3-stage	Precision: <8 arc-min	Standard: <12 arc-min

PLS series reducer (PLS060 PLS090 PLS120 PLS160)

		4 optional size	60mm、90mm、120mm、160mm			
		Rated output torque	8.5Nm~680.0Nm			
Ratio	1-stage	3、4、5、7、10				
	2-stage	12、16、20、25、28、35、40、50、70、100				
	3-stage	80、100、125、140、175、200、250、350、400、500、700、1000				
backlash	1-stage	Precision: <3 arc-min	Standard:	<8 arc-min		
	2-stage	Precision: <5 arc-min	Standard:	<10 arc-min		
	3-stage	Precision: <8 arc-min	Standard:	<12 arc-min		


PLH series reducer (PLH064 PLH090 PLH120 PLH160)

4 optional size		64mm、90mm、120mm、160mm	
Rated output torque		8.5Nm~680.0Nm	
Ratio	1-stage	3、4、5、7、10	
	2-stage	12、16、20、25、28、35、40、50、70、100	
	3-stage	80、100、125、140、175、200、250、350、400、500、700、1000	
backlash	1-stage	Precision: <3 arc-min	Standard: <8 arc-min
	2-stage	Precision: <5 arc-min	Standard: <10 arc-min
	3-stage	Precision: <8 arc-min	Standard: <12 arc-min

ZPLE series reducer (ZPLE060 ZPLE090 ZPLE120 ZPLE160)

4 optional size		60mm , 90mm , 120mm , 160mm	
Rated output torque		8.5Nm~680.0Nm	
Ratio	1-stage	3, 4, 5, 7, 10	
	2-stage	12, 16, 20, 25, 28, 35, 40, 50, 70, 100	
	3-stage	80, 100, 125, 140, 175, 200, 250, 350, 400, 500, 700, 1000	
backlash	1-stage	Precision: <3 arc/min	Standard: <8 arc/min
	2-stage	Precision: <5 arc/min	Standard: <10 arc/min
	3-stage	Precision: <8 arc/min	Standard: <12 arc/min

ZPLF series reducer (ZPLF060 ZPLF090 ZPLF120 ZPLF160)



<div>4 optional size</div>		60mm , 90mm , 120mm , 160mm	
		<div>Rated output torque</div> <div>8.5Nm~680.0Nm</div>	
Ratio	1-stage	3, 4, 5, 7, 10	
	2-stage	12, 16, 20, 25, 28, 35, 40, 50, 70, 100	
	3-stage	80, 100, 125, 140, 175, 200, 250, 350, 400, 500, 700, 1000	
backlash	1-stage	Precision: <3 arc-min	Standard: <8 arc-min
	2-stage	Precision: <5 arc-min	Standard: <10 arc-min
	3-stage	Precision: <8 arc-min	Standard: <12 arc-min

AB series reducer (AB060 AB090 AB115 AB142 AB180 AB220 AB280 AB330 AB400)

9 optional size		50mm , 90mm , 115mm , 142mm , 180mm , 220mm , 280mm , 330mm , 400mm	
Rated output torque		18.5Nm~9800.0Nm	
Ratio	1-stage	3, 4, 5, 7, 10	
	2-stage	9, 15, 20, 25, 30, 35, 40, 50, 70, 1000	
	3-stage	64, 80, 100, 150, 200, 250, 350, 400, 500, 700, 1000	
backlash	1-stage	Precision: <4 arc-min	Standard: <8 arc-min
	2-stage	Precision: <6 arc-min	Standard: <10 arc-min
	3-stage	Precision: <7 arc-min	Standard: <18 arc-min

ABR series reducer (ABR060 ABR090 ABR115 ABR142 ABR180 ABR220 ABR280)

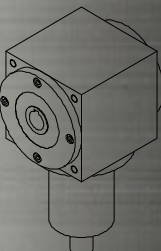
7 optional size		60mm , 90mm , 115mm , 142mm , 180mm , 220mm , 280mm
Rated output torque		18.5Nm~5120.0Nm
Ratio	1-stage	3, 4, 5, 7, 10
	2-stage	9, 15, 20, 25, 30, 35, 40, 50, 70, 1000
	3-stage	64, 80, 100, 150, 200, 250, 350, 400, 500, 700, 1000
backlash	1-stage	Precision: <5 arc-min Standard: <8 arc-min
	2-stage	Precision: <7 arc-min Standard: <10 arc-min
	3-stage	Precision: <9 arc-min Standard: <18 arc-min

VS series reducer (VS09 VS11 VS14 VS17 VS21 VS24 VS28)

A 3D line drawing of a VS series gear motor. The motor has a square-shaped housing with four mounting feet on the bottom face. A central output shaft with a key is visible. The drawing is a perspective view from the front-left.

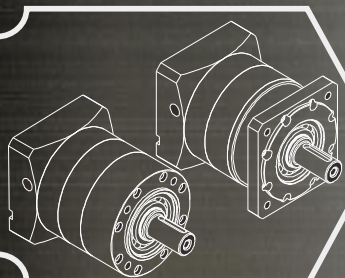
7 optional size	90mm、110mm、140mm、170mm、210mm、240mm、280mm
The allowable input power	1. 1KW~188KW
Ratio	1、1.5、2、3、4、5

VA series reducer (VA09 VA11 VA14 VA17 VA21 VA24 VA28)

	7 optional size	90mm、110mm、140mm、170mm、210mm、240mm、280mm
	The allowable input power	1.1KW~188KW
	Ratio	1、1.5、2、3、4、5

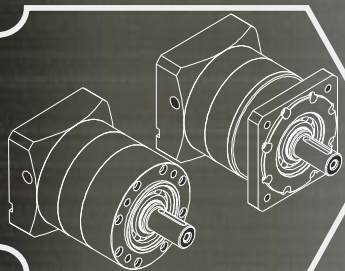
Spur Gear Cost-effective Planetary Gear Reducers

For Stepper Motors



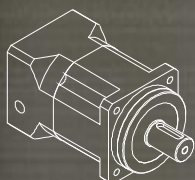
DLE42 & DLF42 Series

Frame Size(mm) : 42mm;
Reduction Ratios : 1:4/5/8/10/16/20/25/40/50/64/80/100/125/160/200
Backlash : 30 arcmin, 40 arcmin, 60 arcmin;
Input & Output Shaft Type: All Main Stream, Customizable;
Average Lifetime : >20000 Hours



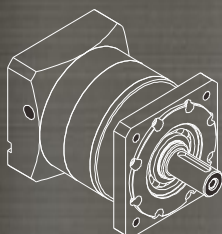
DLEP42 & DLFP42 Series

Frame Size(mm) : 42mm;
Reduction Ratios : 1:4/5/8/10/16/20/25/40/50/64/80/100/125/160/200
Backlash : 15 arcmin, 20 arcmin, 30 arcmin;
Input & Output Shaft Type: All Main Stream, Customizable;
Average Lifetime : >20000 Hours



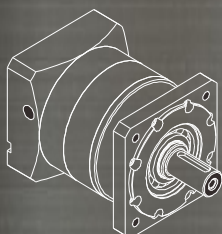
DLFS42 Series

Frame Size(mm) : 42mm;
Reduction Ratios : 1:4/5/7/10/16/20/25/28/35/40/50/70/100
Backlash : 5 arcmin, 7 arcmin;
Input & Output Shaft Type: All Main Stream, Customizable;
Average Lifetime : >20000 Hours



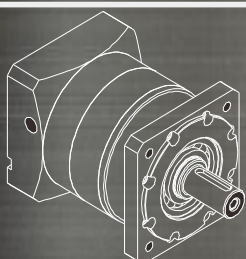
DLF57 Series

Frame Size(mm) : 57mm;
Reduction Ratios : 1:4/5/7/10/16/20/25/28/35/40/50/70/64/80/100/125/140/175/200
Backlash : 20 arcmin, 30 arcmin, 50 arcmin;
Input & Output Shaft Type: All Main Stream, Customizable;
Average Lifetime : >20000 Hours



DLFP57 Series

Frame Size(mm) : 57mm;
Reduction Ratios: 1:4/5/7/10/16/20/25/28/35/40/50/70/64/80/100/125/140/175/200
Backlash : 15 arcmin, 20 arcmin, 30 arcmin;
Input & Output Shaft Type: All Main Stream, Customizable;
Average Lifetime : >20000 Hours



DLF86 Series

Frame Size(mm) : 86mm;
Reduction Ratios: 1:4/5/7/10/16/20/25/28/35/40/50/70/64/80/100/125/140/175/200
Backlash : 10 arcmin, 15 arcmin, 25 arcmin;
Input & Output Shaft Type: All Main Stream, Customizable;
Average Lifetime : >20000 Hours

Electric Spindles Overview

GDL Series CNC Center Spindles with ATC

Cooling Type: Air and Water Cooling.
Speed: 10000 to 30000rpm.
Power: 1.5 to 14KW.
Voltage: 220/380VAC.
Current: 5.6 to 28A.
Tools: Multiple Types of Tools Supported.
Torque: 0.6 to 13.38 N.m.
Certificate: CE, CCC.
Highlights:
Made in Germany Bearings and Grease
High Speed Automatic Tool Exchange
High-Performance, Long Lifetime.
Applications: CNC Centers metal and multiple materials Processing.



GDK Series Metalwork Constant Torque Spindles

Cooling Type: Water Cooling.
Speed: 12000 to 24000rpm.
Power: 0.4 to 11KW.
Voltage: 110 or 220/380VAC.
Current: 2.4 to 38A.
Tools: ER11, ER16, ER20, ER25, ER32, ER40.
Torque: 0.16 to 8.76N.m.
Certificate: CE, CCC.
Highlights:
Wide Coverage of Applications,
High Speed Improve Processing Quality,
Low Temperature Rise and Long Lifetime.
Applications: Metal Materials.



GDK Series CNC Center Metal Drilling Spindles

Cooling Type: Water Cooling.
Speed: 800 to 12000rpm.
Power: 2.2 to 5.5KW.
Voltage: 220/380VAC.
Current: 6.4 to 11A.
Tools: ER20, ER32.
Frequency: Variable, 20 to 450Hz.
Certificate: CE, CCC.
Highlights:
Multi-staged Motor Adopted for Fast Drilling,
Improved Sealing Structure Prevent Liquid Entry and Longer Lifetime,
High-Performance, Long lifetime.
Applications: CNC Centers Metal Drilling Applications, Multi-materials, Copper, Steel, Stainless Steel.



GDK Series CNC Center Metal Milling & Engraving Spindles

Cooling Type: Water Cooling.
Speed: 6000 to 24000rpm.
Power: 1.2 to 7.5KW.
Voltage: 156 to 380VAC.
Current: 6 to 15.5A.
Tools: ER20, ER25, ER32, ER40.
Torque: Variable, 0.48 to 8.75N.m.
Certificate: CE, CCC.
Highlights:
High Torque for Low Speed and High Precision for High Speed,
Low Noise, Low Vibration, Low Temperature Rise,
Good Rigidity and Long Lifetime.
Applications: CNC Centers Metal Milling and Engraving Applications.



GDC Series Ultrasonic Spindles

Cooling Type: Water Cooling.
Speed: 12000 to 15000rpm.
Power: 0.8 to 3.7KW.
Voltage: 220/380VAC.
Current: 3 to 8A.
Tools: ER11, ER16, BT30.
Frequency: 250/400Hz.
Certificate: CE, CCC.
Highlights:
Effectively Reduce Processing Resistance
Greatly Improved Efficiency and Processing Quality.
Applications: Processing of Glass, Ceramic, Jade, Sapphire, Hard Alloy, Semiconductor Parts, Hard and Brittle Materials, such as Quartz and Alumina.



GDZ Series Advertisementwork Spindles

Cooling Type: Water Cooling or Self Cooling.
Speed: 10000 to 60000rpm.
Power: 0.07 to 3.7KW.
Voltage: 36 to 380VAC.
Current: 0.6 to 16A.
Tools: ER8, ER11, ER16, ER20.
Lubrication: Grease.
Certificate: CE, CCC.
Highlights:
Wide Power Range, Covering More Applications,
High Precision, Low Noise, Long Lifetime,
Applications: Processing of Advertisement Materials, such as Two-color Board, Organic Board (Acrylic etc.), Artificial Stone, PVC Board, Wood, MDF, ABS.



GDF Series Normal Woodwork Spindles

Cooling Type: Air Cooling.
Speed: 18000 to 24000rpm.
Power: 0.8 to 9 KW.
Voltage: 220/380VAC.
Current: 3 to 8A.
Tools: ER11, ER16, BT30.
Torque: 0.18 to 4.78 N.m.
Certificate: CE, CCC.
Highlights:
Flexible Installation (With Installation Base Available),
Wide Range of Power and Torque Selection,
Long Lifetime,
High Performance.
Applications: For Various Wood Applications.



GDF Series Woodwork Extra Low Noise Spindles

Cooling Type: Air Cooling
Speed: 18000rpm.
Power: 4 to 13.5KW.
Voltage: 220/380VAC.
Current: 9 to 31A.
Tools: ER32, ER40.
Lubrication: Grease.
Certificate: CE, CCC.
Highlights:
Innovative Fan Technology Enables Low Noise,
High Power, Lower Temperature Rise,
Long Lifetime, High Performance.
Applications: Various Wood Applications.



GDF Series Woodwork Edge Sealed Spindles

Cooling Type: Air Cooling.
Speed: 4000 to 18000rpm.
Power: 0.3 to 9 KW.
Voltage: 220/380VAC.
Current: 2 to 31A.
Tools: $\varnothing 15, \varnothing 16, \varnothing 35, \varnothing 40$.
Torque: 0.16 to 13.5 N.m.
Certificate: CE, CCC.
Highlights:
Innovative Fan Technology Enables Low Noise,
High Power, Lower Temperature Rise,
Long Lifetime, High Performance.
Applications: For Various Wood Applications.



GDF Series Woodwork Double Head Spindles

Cooling Type: Air Cooling
Speed: 6000-18000rpm.
Power: 3.5 to 9 KW.
Voltage: 220/380VAC.
Current: 7.8 to 19A.
Tools: ER32, ER40.
Lubrication: Grease.
Certificate: CE, CCC.
Highlights:
Double Head, Bi-directional,
High Processing Efficiency,
Long Lifetime, High Performance.
Applications: Various Wood Applications.



MKI Series Variable Frequency Drivers

Advanced Vector Control Inverters

Naming Rules

MODEL:3MKI3.7/5.5KW380

INPUT: 3PH 380V 50Hz/60Hz
OUTPUT: 3PH 380V 9.0/13.0
FREQ RANGE: 0.1-320Hz 3.7/5.5kW



14011311111



MODE: 3 MKI 3.7 / 5.5 KW 380

— Voltage: 380VAC or 220VAC
— Power Unit: W or KW
— Rate Power in Variable Power Mode
— Rated Power in Constant Torque Mode
— Serial Name
— Phase: Blank (1 Phase), 3(3 Phase)

Advantages:

High Reliability!
Extra-long Lifetime!

High Performance!
High Cost-effectiveness!

Notice: Higher Power VFDs available!

Models Overview

Model No.	Rated Output Power (KW)	Rated Input current (A)	Rated Output Current (A)	Motor Power (kW)
1PH/3PH AC 220V ±15%				
MKI400W220	0.4	5.4	2.4	0.4
MKI750W220	0.75	7.2	4.5	0.75
MKI1.5KW220	1.5	10	7	1.5
MKI2.2KW220	2.2	16	10	2.2
MKI3.7KW220	3.7	17	16	3.7
MKI4.5KW220	4.5	19	18	4.5
MKI5.5KW220	5.5	21	20	5.5
MKI7.5KW220	7.5	31	30	7.5
3PH AC380V±15%				
3MKI750W380	0.75	3.8	2.5	0.75
3MKI1.5KW380	1.5	5	3.7	1.5
3MKI2.2KW380	2.2	5.8	5	2.2
3MKI3.7/5.5KW380	3.7/5.5	10.0/15.0	9.0/13.0	3.7/5.5
3MKI4.5KW380	4.5	12.2	10.5	4.5
3MKI5.5KW380	5.5	15	13	5.5
3MKI7.5KW380	7.5	14	17.5	7.5
3MKI7.5/11KW380	7.5/11	20.0/26.0	17.0/25.0	7.5/11
3MKI11/15KW380	11/15	26.0/35.0	25.0/32.0	11/15
3MKI15/18.5KW380	15/18.5	35.0/38.0	32.0/37.0	15/18.5
3MKI18.5/22KW380	18.5/22	38.0/46.0	37.0/45.0	18.5/22
3MKI22/30KW380	22/30	46.0/62.0	45.0/60.0	22/30
3MKI30/37KW380	30/37	62.0/76.0	60.0/75.0	30/37
3MKI37/45KW380	37/45	76.0/90.0	75.0/90.0	37/45
3MKI45/55KW380	45/55	90.0/105.0	90.0/110.0	45/55
3MKI55KW380	55	105.0	110.0	55
3MKI75KW380	75	140.0	150.0	75
3MKI75/90KW380	75/90	140.0/160.0	150.0/176.0	75/90
3MKI90/110KW380	90/110	160.0/210.0	176.0/210.0	90/110
3MKI110/132KW380	110/132	210.0/240.0	210.0/253.0	110/132
3MKI132/160KW380	132/160	240.0/290.0	253.0/300.0	132/160
3MKI169/185KW380	160/185	290.0/330.0	300.0/340.0	160/185
3MKI185/200KW380	185/200	330.0/370.0	340.0/380.0	185/200
3MKI200/220KW380	200/220	370.0/410.0	380.0/420.0	200/220
3MKI220/250KW380	220/250	410.0/460.0	420.0/470.0	220/250



Technical Features

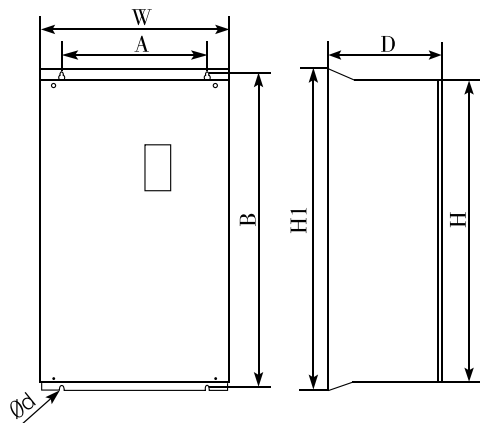
Item	
Standard functions	Control mode Sensorless flux vector control (SFVC) Voltage/Frequency (V/F) control
	Maximum frequency Vector control: 0–320 Hz V/F control: 0–3200Hz
	Carrier frequency 1–16 kHz The carrier frequency is automatically adjusted based on the load features.
	Input frequency resolution Digital setting: 0.01 Hz Analog setting: maximum frequency x 0.025%
	Startup torque G type: 0.5 Hz/150% (SFVC) P type: 0.5 Hz/100%
	Speed range 1:100 (SFVC)
	Speed stability accuracy ± 0.5% (SFVC)
	Overload capacity G type: 60s for 150% of the rated current, 3s for 180% of the rated current. P type: 60s for 120% of the rated current, 3s for 150% of the rated current.
	Torque boost Fixed boost Customized boost 0.1%–30.0%
	V/F curve Straight-line V/F curve Multi-point V/F curve N-power V/F curve (1.2-power, 1.4-power, 1.6-power, 1.8-power, square)
	V/F separation Two types: complete separation; half separation
	Ramp mode Straight-line ramp S-curve ramp Four groups of acceleration/deceleration time with the range of 0.0–6500.0s
	DC braking DC braking frequency: 0.00 Hz to maximum frequency Braking time: 0.0–100.0s Braking action current value: 0.0%–100.0%
	JOG control JOG frequency range: 0.00–50.00 Hz JOG acceleration/deceleration time: 0.0–6500.0s
Item	
Standard functions	Onboard multiple preset speeds It implements up to 16 speeds via the simple PLC function or combination of X terminal states
	Onboard PID It realizes process-controlled closed loop control system easily.
	Auto voltage regulation (AVR) It can keep constant output voltage automatically when the mains voltage changes.
	Overvoltage/Overcurrent stall control The current and voltage are limited automatically during the running process so as to avoid frequent tripping due to overvoltage/over current.
	Torque limit and control It can limit the torque automatically and prevent frequent over current tripping during the running process.
	Instantaneous stop doesn't stop The load feedback energy compensates the voltage reduction so that the AC drive can continue to run for a short time.
	Rapid current limit It helps to avoid frequent over current faults of the AC drive.
	High performance Control of asynchronous motor is implemented through the high-performance current vector control technology.
	Timing control Time range: 0.0–6500.0 minutes
	Communication methods RS485
	Running command channel Given by the panel, control terminals, Serial communication port, can be switched by many ways
	Frequency source 10 kinds of frequency source, given by Digital analog voltage, analog current, Pulse, serial port, can be switched by many ways
	Auxiliary frequency source 10 kinds of Frequency source, can easily realize Micro adjustment, frequency Synthesizer
Input and output	Input terminals 6 digital input terminals, one of which supports up to 100 kHz high-speed pulse input (optional). 2 analog input terminal, one of which only supports 0–10 V voltage input and the other supports 0–10 V voltage input or 4–20 mA current input.
	Output terminal 1 digital output terminal 1 relay output terminal 1 analog output terminal :that supports 0–20 mA current output or 0–10 V voltage output

operation on the operation panel	LED display It displays the parameters.
	Key locking and function selection It can lock the keys partially or completely and define the function range of some keys so as to prevent mis-function.
	Protection mode Motor short-circuit detection at power-on, output phase loss protection, over-current protection, over-voltage protection, under voltage protection, overheat protection and overload protection.
Environment	Installation location Indoor, avoid direct sunlight, dust, corrosive gas, combustible gas, oil smoke, vapour, drip or salt.
	Altitude Lower than 1000m (Lower the grades when using higher then 1000m)
	Ambient temperature -10°C ~40°C (Lower the grades if the ambient temperature is between 40°C and 50°C)
	Humidity Less than 95%RH, without condensing
	Vibration Less than 5.9 m/s ² (0.6 g)
Storage temperature -20°C~60°C	

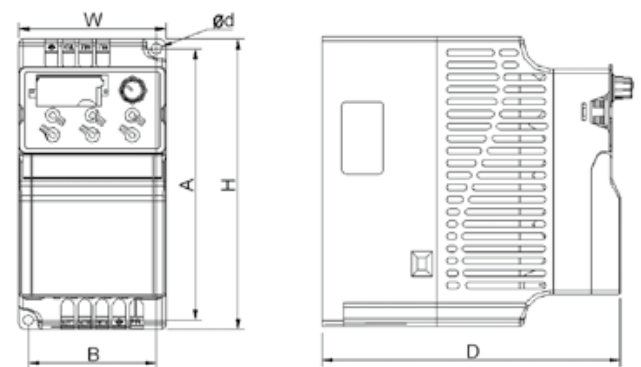
Mechanical Dimensions

Model	Outline dimension(mm)				Installation size(mm)		
	W	H	H1	D	A	B	Ød
MKI400W220 MKI750W220 MKI1.5KW220	72	142	-	152	62.7	132.7	5
MKI2.2KW220 MKI3.7KW220	100	183	-	143	90	173	5
MKI5.5KW220 MKI7.5KW220	130	260	-	184	120	250	5
3MKI750W380 3MKI1.5KW380 3MKI2.2KW380	72	142	-	152	62.7	132.7	5
3MKI3.7/5.5KW380 3MKI5.5KW380	100	183	-	143	90	173	5
3MKI7.5KW380 3MKI11/15KW380	130	260	-	184	120	250	5
3MKI15/18.5KW380 3MKI22/30KW380	195	280	-	179	182.5	266	7
3MKI30/37KW380 3MKI37/45KW380	245	390	425	193	180	410	7
3MKI45/55KW380 3MKI55/75KW380	300	500	540	252	200	522	9
3MKI75/90KW380	338	546	576	256.5	270	560	9
3MKI90/110KW380 3MKI110/132KW380	338	550	580	300	270	564	9
3MKI132/160KW380 3MKI160/185KW380	400	675	715	310	320	695	11
3MKI132/160KW380 3MKI160/185KW380	400	871.5	915	310	320	895	11
3MKI185/200KW380 3MKI220/250KW380	300	1035	1080	500	A1: 220 A2: 150 E1: 220 E2: 450 Ød: 13		

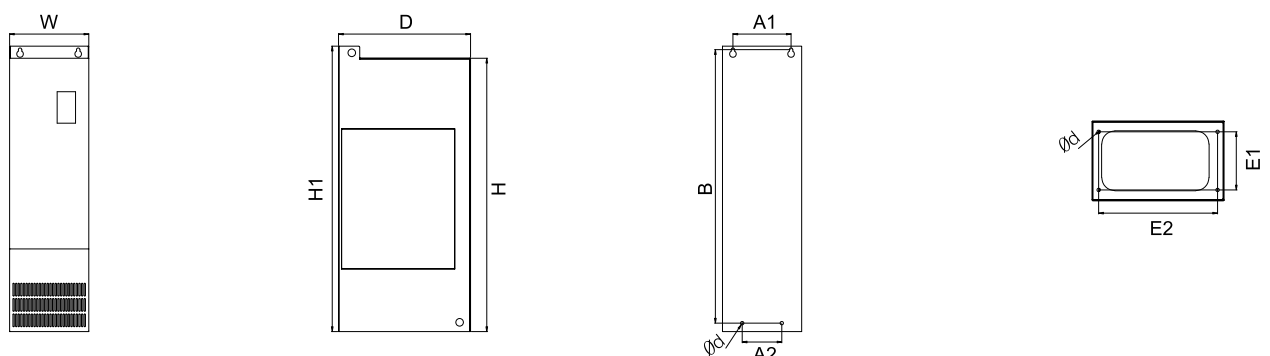
0.4kW to 22kW Outline Dimensions

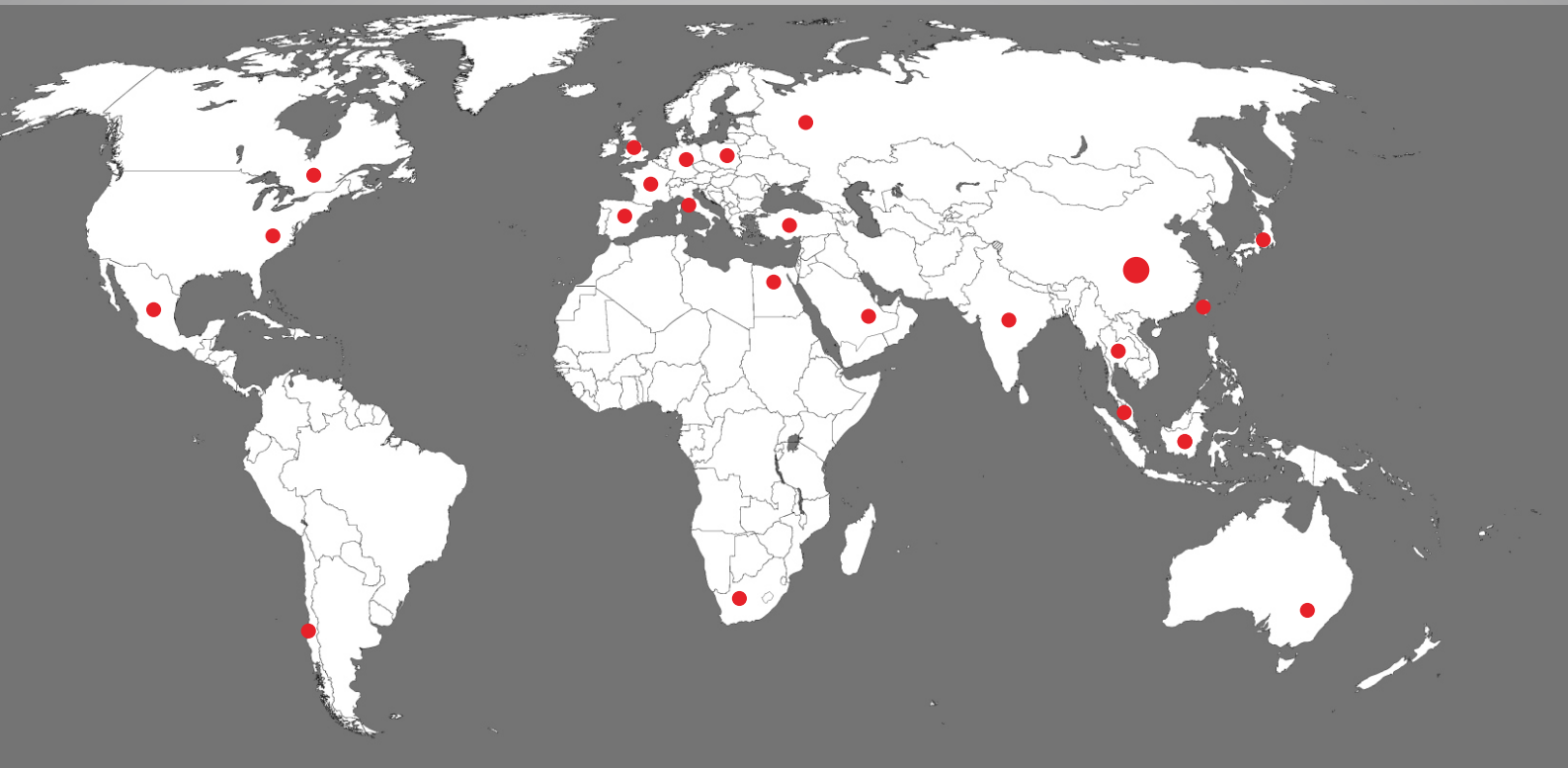


30kW to 160kW Outline Dimensions



185kW to 220kW Outline Dimensions





Contact Us

Zion Kaifull Automation Technology Co., Ltd.

Address: Floor 18, Tower B, No.89 of L.X. Road,
Longgang District, Shenzhen, China.

Email : sales@zionkaifull.com
technic@zionkaifull.com

Phone : 0086-186 8216 0096

Fax : 0086-0755-2836 4232

Website: www.zionkaifull.com

