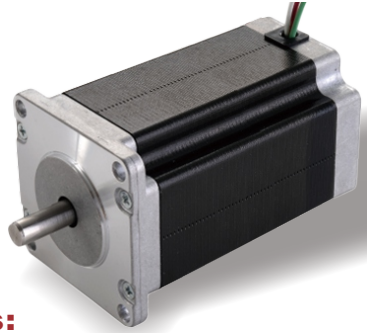


360AHS150

Nema 24, 3 Phase Standard Hybrid Stepper Motors



Specifications

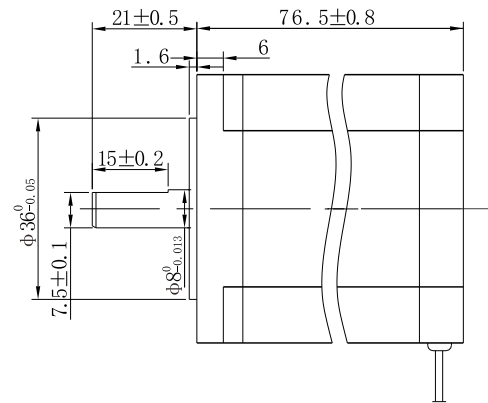
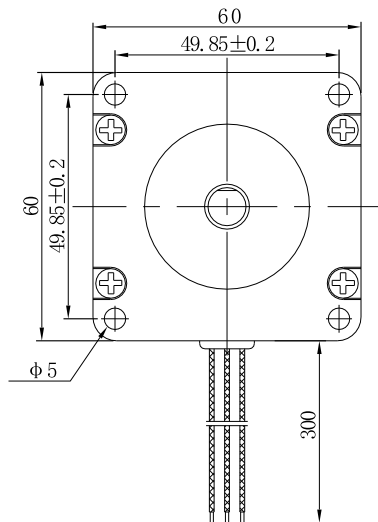
Step Angle	1.2° (3 Phase)
Step Angle Accuracy	0.06°
Shaft Type	Single (Customization Accepted)
Max. Temperature Rise	Less than 80 °C (Rated Current)
Max. Surface Temperatures	Max Allowed 100°C
Ambient Temperature	-20 °C ~ +50 °C
Insulation Grade	100 MΩ Min. , Class B
Dielectric Strength	500 VAC for 1 Minute
Max. Axial Load	15N
Max. Radial Load	90N (15mm from mounting Surface)
Certificates	Rohs, CE, CCC

Highlights:

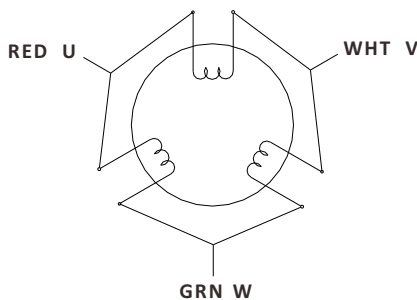
- By Japanese Top Manufacturer;
- High Speed, High Smoothness;
- High Efficiency, Long lifetime ;
- Flexible in **Customization**:
Shaft Type(diameters, dual shaft, hollow shaft, flat, key),
Torque Values, Lead Type etc.

Model	Current A/∅	Resistance Ω/∅	Inductance mH/∅	Holding Torque N.m	Rotor Inertia g.cm ²	Lead # of Leads	Weight kg	Length mm	Matching Drive
360AHS150-5803S-77	5.8	0.50	1.3	1.5	460	3	1.3	76.5	Y3SD3

Mechanical Dimensions (in mm)



Wiring Diagram



Torque Speed Curves

