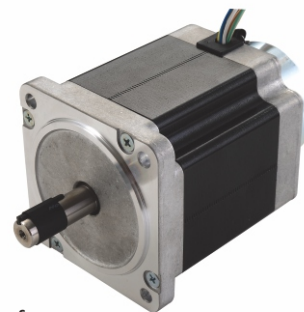


86AHS630 Stepper Motors with Brake Nema 34, 2 Phase Hybrid Stepper Motors



Specifications

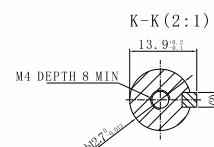
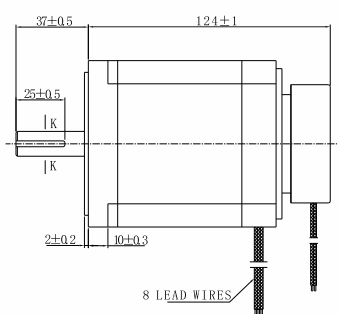
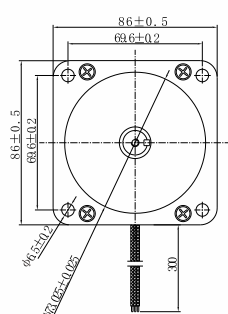
Step Angle	1.8°
Step Angle Accuracy	±0.09° (full step, no load)
Brake Power	12W
Brake Reaction Time	50ms
Max. Surface Temperature	100 °C Max.(max. allowed temp.)
Ambient Temperature	-20 °C ~ +50 °C
Insulation Resistance	500VDC, 100 MΩ Min.
Dielectric Strength	500 VAC, 1min, Class B
Max. Radial Load	60N
Max. Axial Load	320N (25mm from installation point)

Highlights:

- Japanese Top Manufacturer;
- Low Noise, Low Vibration;
- High Speed, High Smoothness;
- High Efficiency, Long lifetime ;
- Flexible in **Customization**:
Shaft Type(diameters, dual shaft, hollow shaft, flat, key),
Torque Values, Lead Type etc.

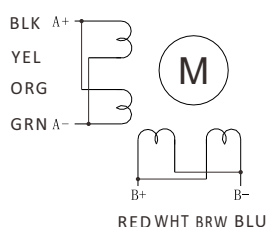
Model	Holding Torque N.m	Current A/∅	Resistance Ω/∅	Inductance mH/∅	Rotor Inertia g.cm ²	Bi/Unipolar # of Leads	Brake Torque N.m	Brake Voltage DC V	Weight Kg	Length Include Brake mm
86AHS630-6408BR-124	6.3	6.4 Parallel	0.33	2.7	1850	Bi(8)	4.0	24	3.1	124
86AHS630-3208BR-124	6.3	3.2 Serial	1.32	10.8	1850	Bi(8)	4.0	24	3.1	124

Mechanical Dimensions in mm

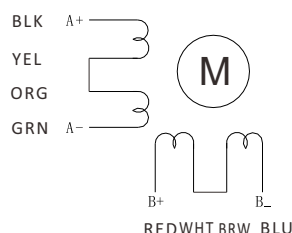


86AHS630-6408BR-124
86AHS630-3208BR-124

Wiring Diagram



86AHS630-6408BR-124

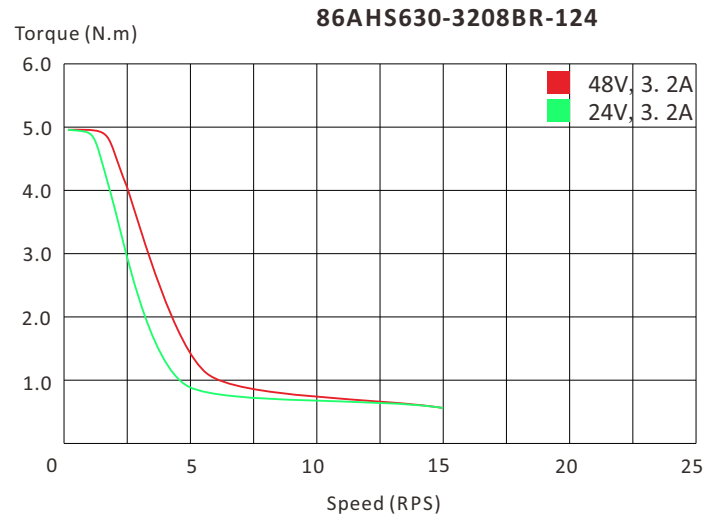
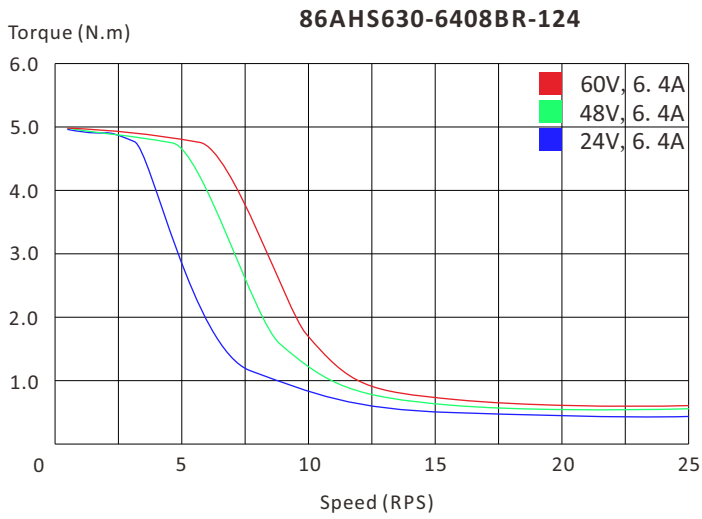


86AHS630-3208BR-124

Note: Brake wiring as, Red for 24+ and Black for GND.

86AHS Series Torque Speed Curves

Nema 34, 2 Phase Hybrid Stepper Motors



5