

Specifications

Step Angle	1.8°
Step Angle Accuracy	±0.09° (full step, no load)
Resistance Accuracy	±10%
Inductance Accuracy	±20%
Temperature Rise	80 °C Max.(rated current)
Ambient Temperature	-20 °C ~ +50 °C
Insulation Resistance	500VDC, 100 MΩ Min.
Dielectric Strength	500 VAC, 1s, 3mA, Class B
Shaft Radial Play	0.02 Max. (450 g-load)
Shaft Axial Play	0.08 Max. (920 g-load)

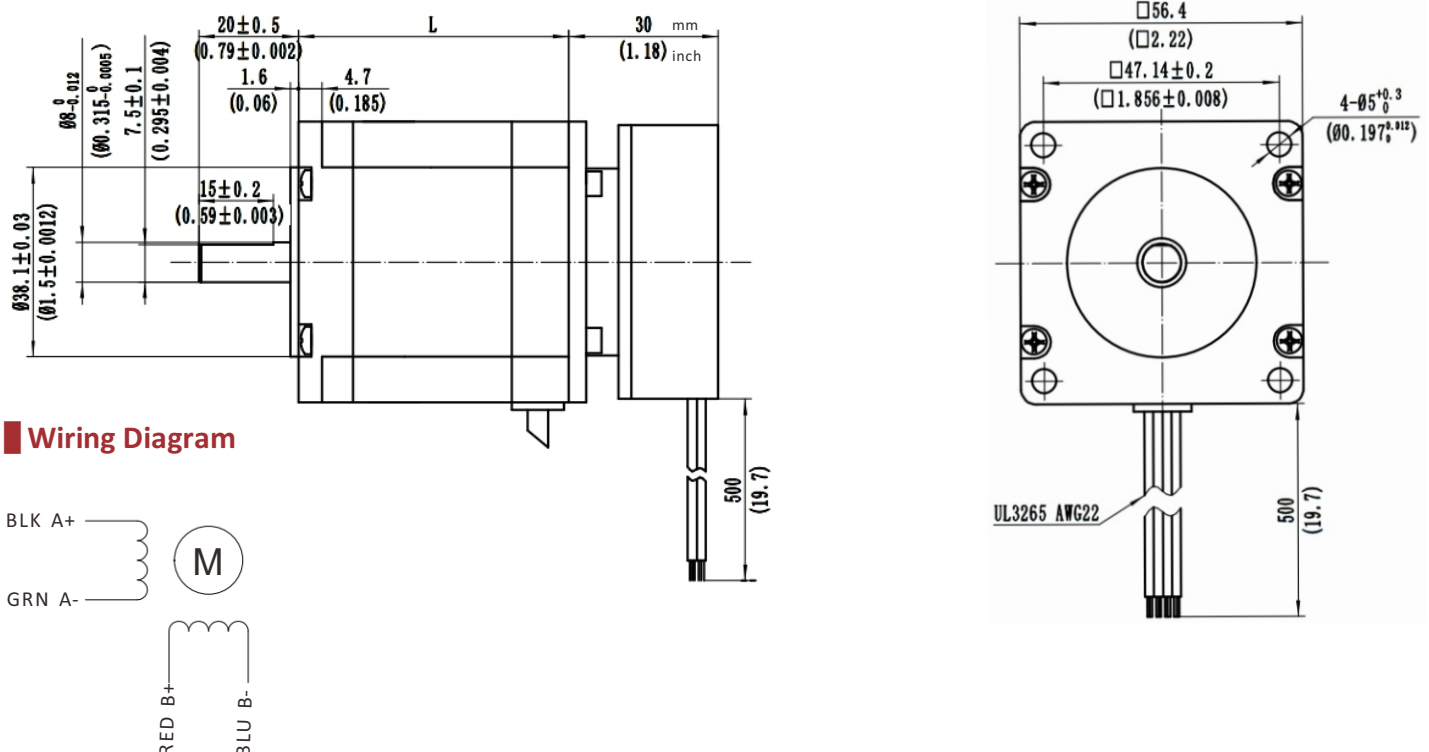


Highlights:

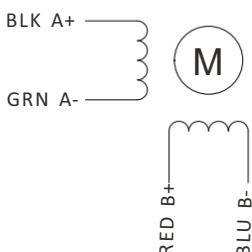
- Low Noise, Low Vibration;
- High Speed, High Smoothness;
- High Efficiency, Long lifetime ;
- Flexible in **Customization**:
Shaft Type(diameters, dual shaft, hollow shaft, flat, key),
Torque Values, Lead Type etc.

Model	Holding Torque N.m	Current A/∅	Resistance Ω/∅	Inductance mH/∅	Rotor Inertia g.cm ²	Bi/Unipolar # of Leads	Brake Torque N.m	Brake Voltage V	Weight Kg	Length L mm
57HS064-2404BR-40	0.64	2.4	1.2	2.4	120	Bi(4)	1.0	24	0.8	40.5
57HS130-3504BR-53	1.3	3.5	0.8	2.4	260	Bi(4)	1.0	24	1.0	53.5
57HS230-4404BR-75	2.3	4.4	0.76	2.5	450	Bi(4)	1.0	24	1.4	75.5
57HS250-4404BR-81	2.5	4.4	0.81	3.0	520	Bi(4)	1.0	24	1.5	81.5
57HS310-4404BR-99	3.1	4.4	0.95	3.7	680	Bi(4)	1.0	24	1.8	99.5
57HS360-4404BR-113	3.6	4.0	1.16	4.5	810	Bi(4)	1.0	24	2.3	113.0

Mechanical Dimensions in mm



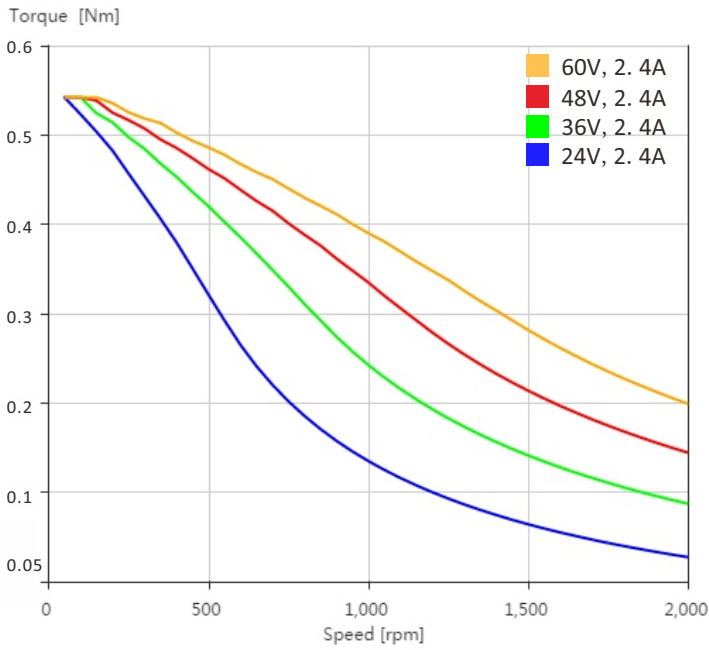
Wiring Diagram



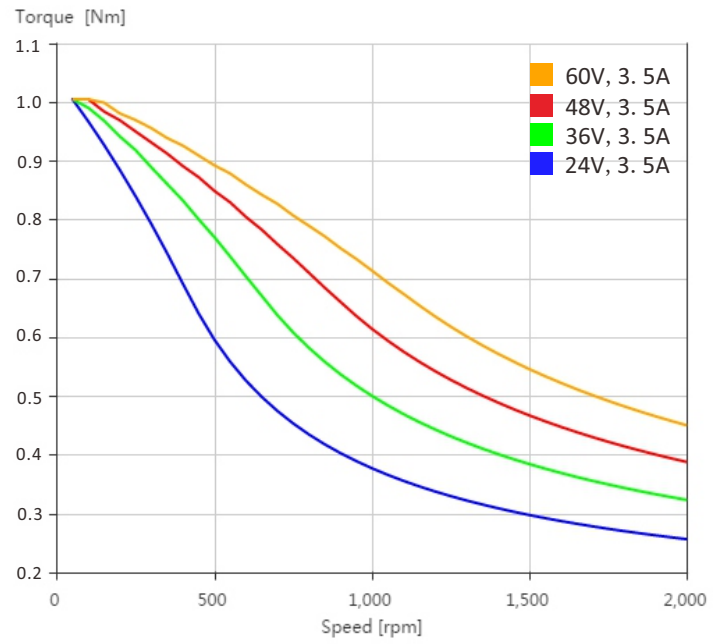
57HS Series Torque Speed Curves

Nema 23, 2 Phase Hybrid Stepper Motors

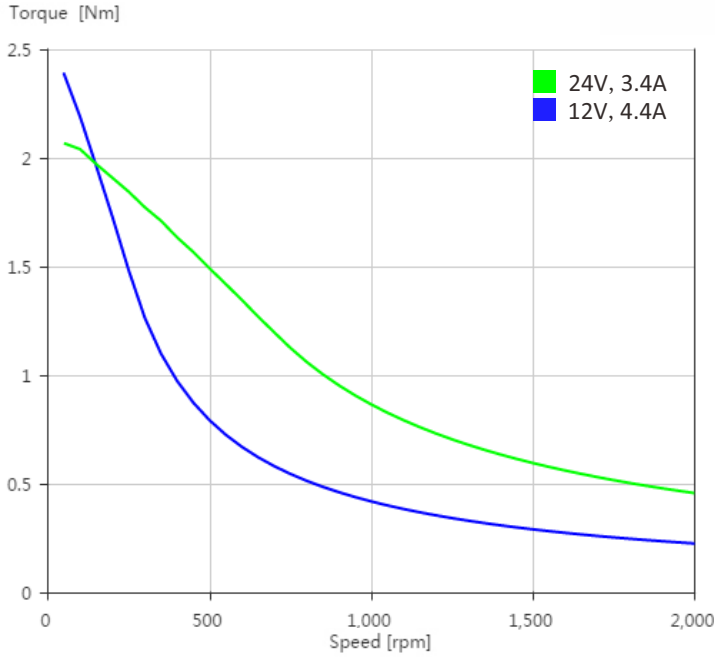
57HS064-2404BR-40



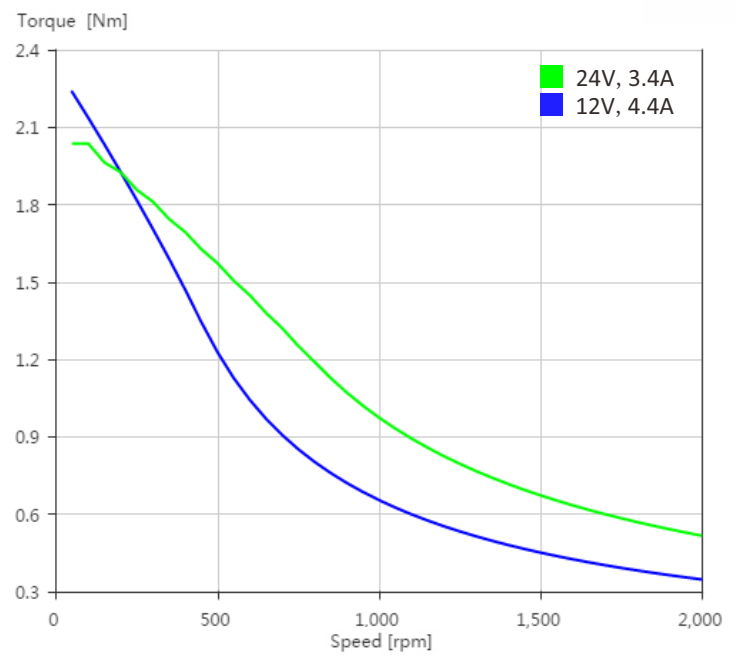
57HS130-3504BR-53



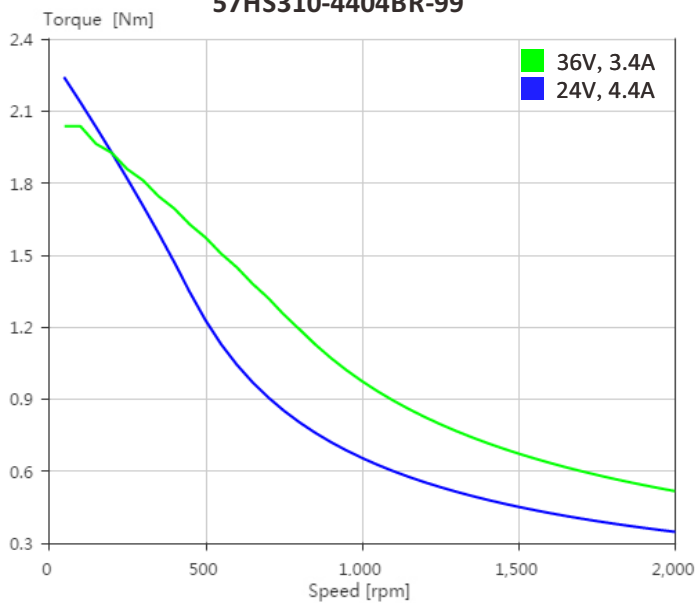
57HS230-4404BR-75



57HS250-4404BR-81



57HS310-4404BR-99



57HS360-4404BR-113

