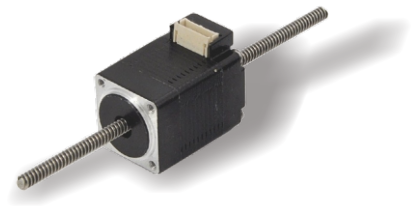


20LHS054N-100

Hybrid Linear Stepper Motors

2Phase Nema 8, No-captive



Specifications

Step Angle	1.8° (2 Phase)
Step Angle Accuracy	±0.09°
Size	Nema 8
Insulation Grade	500VDC, 20 MΩ Min. , Class B
Dielectric Strength	500 VAC for 1 Minute
Temperature Rise	Less than 80°C (Rated Current)
Surface Temperature	Max. Allowed 100°C
Humidity Range	20% to 90% RH
IP Grade	IP40
Certificates	Rohs, CE, CCC

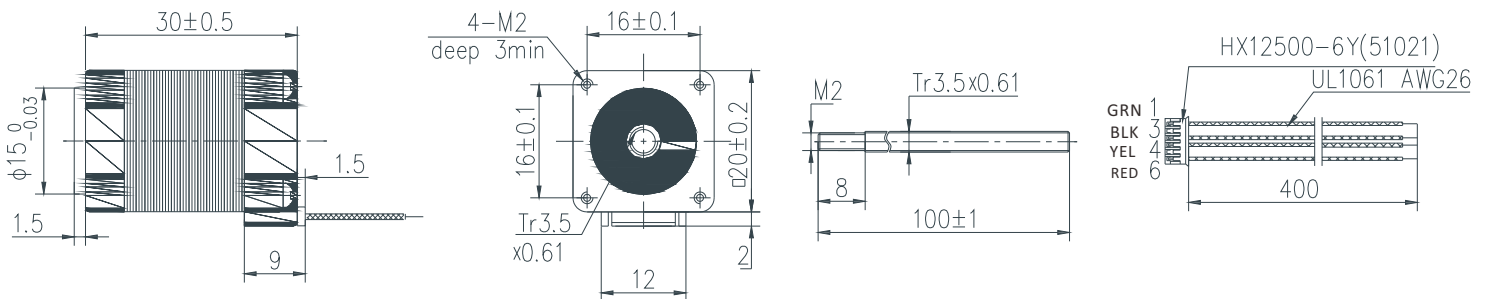
Highlights:

- Low Noise, Low Vibration, Low Heating;
- High Smoothness;
- High Efficiency, Long lifetime ;
- Flexible in Customization: Screw Diameter, Screw Lead, Screw Length, Motor Length, Electric Parameters, Motor Surface Processing etc.

Model	Current	Resistance	Inductance	Min Thrust	Rotor Inertia	Bi/Unipolar	Screw Lead	Screw Length	Weight	Motor Length	Driver
	A/∅	Ω/∅	mH/∅	N @10RPS	g.cm ²	# of Wires	mm	mm	kg	mm	
20LHS0504N-100	0.5	6.5	1.7	2	2	Bi (4)	0.61	100	0.06	30	Y2SD1

Note: Customization of motor and leadscrew specifications available.

Mechanical Dimensions (in mm)



Wiring Diagram

